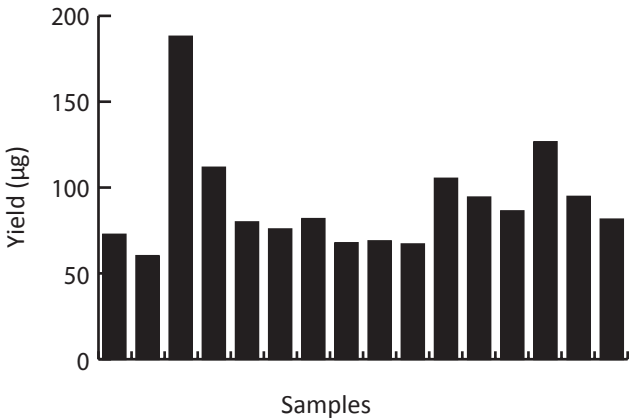


Yield of genomic DNA purified using the E.Z.N.A.® Blood Midi DNA Kit



DNA was purified from packed blood cells of 1 mL whole blood using the E.Z.N.A.® Blood DNA Midi Kit. DNA was eluted in 500 µL and quantitated using Thermo NanoDrop® 2000.

A _{260/280}	A _{260/230}	Yield (µg)
1.86	1.97	75.2
1.85	1.84	93.9
1.84	1.94	77.4
1.85	2.08	158.0
1.86	2.06	182.0
1.85	1.97	453.8
1.95	1.94	107.0
1.83	1.89	115.2
1.85	2.02	60.7
1.86	1.91	82.4

DNA was purified from 4 mL saliva stored in Oragene® tubes using the E.Z.N.A.® Blood DNA Midi Kit. DNA was eluted in 500 µL and quantitated using Thermo NanoDrop® 2000.