

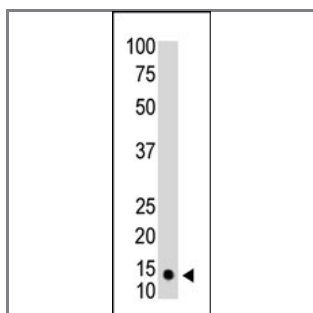
SUMO1 Antibody

Purified Mouse Monoclonal Antibody (Mab)

Catalog #	Applications:	Reactivity:	Accessions:
AM1200b	WB, E	H	P63165

Concentration:	Size:	Isotype:	Clone Name:
0.25 mg/ml	0.1 mg	Mouse IgG1	66AT1320

Application Data: **Calculated MW: 11557 Da**



The anti-SUMO1 monoclonal antibody(Cat. #AM1200b) is used in Western blot to detect SUMO1 in HL60 cell lysate.

Gene ID:	Gene Symbol:
7341	SUMO1

Other Names:

Small ubiquitin-related modifier 1; SUMO-1; Ubiquitin-like protein SMT3C; SMT3 homolog 3; Ubiquitin-homology domain protein PIC1; Ubiquitin-like protein UBL1; GAP modifying protein 1; GMP1; Sentrin; SMT3C; SMT3H3; UBL1

Target/Specificity:

Purified recombinant GST-SUMO1 protein was used as immunogen.

Application Notes:

Suggested Dilution:
 ELISA 1:1,000
 Western blotting 1:100~500

Format:

Purified monoclonal antibody supplied in PBS with 0.09% (W/V) sodium azide. This antibody is purified through a protein G column, eluted with high and low pH buffers and neutralized immediately, followed by dialysis against PBS.

Storage:

Maintain refrigerated at 2-8°C for up to 6 months. For long term storage store at -20°C in small aliquots to prevent freeze-thaw cycles.

Precautions:

SUMO1 Monoclonal Antibody is for research use only and not for use in diagnostic or therapeutic procedures.
