

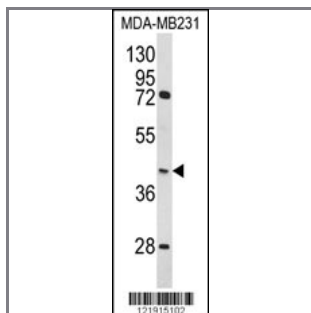
HOMER3 Antibody (Center)

Peptide Affinity Purified Rabbit Polyclonal Antibody (Pab)

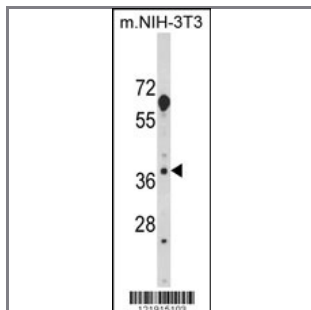
Catalog #	Applications:	Reactivity:	Accessions:
AP6992c	WB, FC, IHC, E	H, M	Q9NSC5

Concentration:	Size:	Isotype:	Clone Name:
0.25 mg/ml	0.1 mg	Rabbit Ig	RB21915

Application Data: Calculated MW: 39836 Da



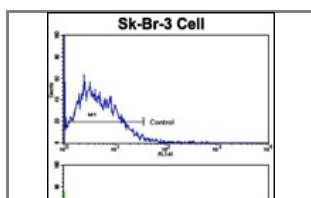
Western blot analysis of HOMER3 Antibody (Center) (Cat. #AP6992c) in MDA-MB231 cell line lysates (35ug/lane). HOMER3 (arrow) was detected using the purified Pab.



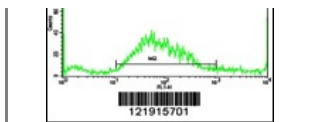
Western blot analysis of HOMER3 Antibody (Center) (Cat. #AP6992c) in mouse NIH-3T3 cell line lysates (35ug/lane). HOMER3 (arrow) was detected using the purified Pab.



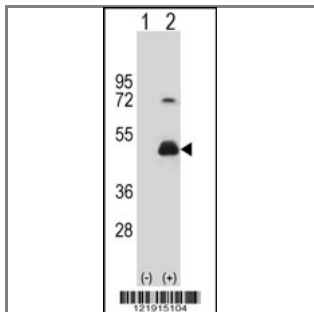
Formalin-fixed and paraffin-embedded human brain tissue with HOMER3 Antibody (Center), which was peroxidase-conjugated to the secondary antibody, followed by DAB staining. This data demonstrates the use of this antibody for immunohistochemistry; clinical relevance has not been evaluated.



Flow cytometric analysis of SK-Br-3 cells using HOMER3 Antibody (Center) (bottom histogram) compared to a negative control cell (top histogram). FITC-conjugated goat-anti-rabbit secondary antibodies were used.



used for the analysis.



Western blot analysis of HOMER3 (arrow) using rabbit polyclonal HOMER3 Antibody (Center) (Cat. #AP6992c). 293 cell lysates (2 ug/lane) either nontransfected (Lane 1) or transiently transfected (Lane 2) with the HOMER3 gene.

Gene ID:

9454

Gene Symbol:

HOMER3

Other Names:

Homer protein homolog 3; Homer-3; HOMER3

Target/Specificity:

This HOMER3 antibody is generated from rabbits immunized with a KLH conjugated synthetic peptide between 287~317 amino acids from the Center region of human HOMER3.

Application Notes:

The suggested dilution is:

ELISA 1:1,000

Western blotting 1:100~500

Flow cytometric 1:10~50

Format:

Purified polyclonal antibody supplied in PBS with 0.09% (W/V) sodium azide. This antibody is purified through a protein A column, followed by peptide affinity purification.

Storage:

Maintain refrigerated at 2-8°C for up to 6 months. For long term storage store at -20°C in small aliquots to prevent freeze-thaw cycles.

Precautions:

HOMER3 Antibody (Center) is for research use only and not for use in diagnostic or therapeutic procedures.
