

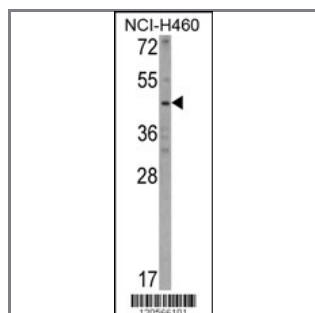
KYNU Antibody (C-term)

Purified Rabbit Polyclonal Antibody (Pab)

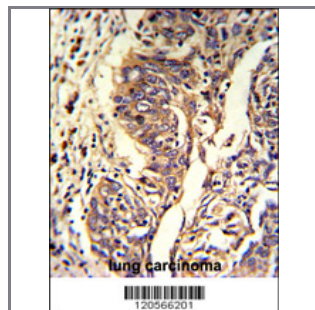
Catalog #	Applications:	Reactivity:	Accessions:
AP6768b	WB, FC, IHC, E	H	Q16719

Concentration:	Size:	Isotype:	Clone Name:
0.25 mg/ml	0.1 mg	Rabbit Ig	RB20566

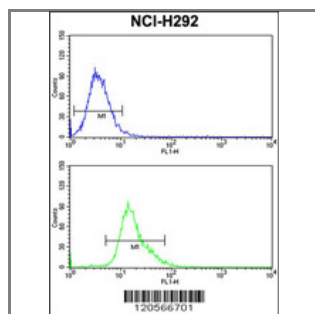
Application Data: Calculated MW: 52352 Da



Western blot analysis of KYNU Antibody (C-term) (Cat. #AP6768b) in NCI-H460 cell line lysates (35ug/lane). KYNU (arrow) was detected using the purified Pab.



Formalin-fixed and paraffin-embedded human lung carcinoma reacted with KYNU Antibody (C-term), which was peroxidase-conjugated to the secondary antibody, followed by DAB staining. This data demonstrates the use of this antibody for immunohistochemistry; clinical relevance has not been evaluated.



KYNU Antibody (C-term) (Cat. #AP6768b) flow cytometry analysis of NCI-H292 cells (bottom histogram) compared to a negative control cell (top histogram). FITC-conjugated goat-anti-rabbit secondary antibodies were used for the analysis.

Gene ID:	Gene Symbol:
8942	KYNU

Other Names:

nureninase; L-kynurenine hydrolase; KYNU

Target/Specificity:

This KYNU antibody is generated from rabbits immunized with a KLH conjugated synthetic peptide between 365~395 amino acids from the C-terminal region of human KYNU.

Application Notes:

The suggested dilution is:

ELISA 1:1,000

Western blotting 1:50~100

Immunohistochemistry 1:50~100

Flow cytometry 1:10~50

Format:

Purified polyclonal antibody supplied in PBS with 0.09% (W/V) sodium azide. This antibody is prepared by Saturated Ammonium Sulfate (SAS) precipitation followed by dialysis against PBS.

Storage:

Maintain refrigerated at 2-8°C for up to 6 months. For long term storage store at -20°C in small aliquots to prevent freeze-thaw cycles.

Precautions:

KYNU Antibody (C-term) is for research use only and not for use in diagnostic or therapeutic procedures.
