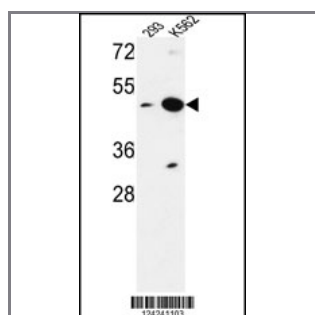


NUPL2 Antibody (N-term)

Peptide Affinity Purified Rabbit Polyclonal Antibody (Pab)

Catalog #	Applications:	Reactivity:	Accessions:
AP9566c	WB, E	H	O15504
Concentration:	Size:	Isotype:	Clone Name:
0.25 mg/ml	0.1 mg	Rabbit Ig	RB24241

Application Data: **Calculated MW: 44872 Da**



NUPL2 Antibody (N-term) (Cat. #AP9566c) western blot analysis in 293K562 cell line lysates (35ug/lane). This demonstrates the NUPL2 antibody detected the NUPL2 protein (arrow).

Gene ID: [11097](#)
Gene Symbol: NUPL2

Other Names:

NUP42 homolog; Nucleoporin hCG1; NLP-1; Nucleoporin-like protein 2; CG1, NUPL2

Target/Specificity:

This NUPL2 antibody is generated from rabbits immunized with a KLH conjugated synthetic peptide between 94~124 amino acids from the N-terminal region of human NUPL2.

Application Notes:

The suggested dilution is:
 ELISA 1:1,000
 Western blotting 1:100~500

Format:

Purified polyclonal antibody supplied in PBS with 0.09% (W/V) sodium azide. This antibody is purified through a protein A column, followed by peptide affinity purification.

Storage:

Maintain refrigerated at 2-8°C for up to 6 months. For long term storage store at -20°C in

small aliquots to prevent freeze-thaw cycles.

Precautions:

NUPL2 Antibody (N-term) is for research use only and not for use in diagnostic or therapeutic procedures.
