

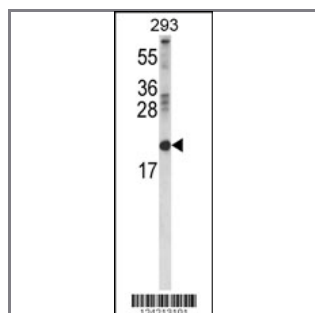
RBP2 Antibody (Center)

Peptide Affinity Purified Rabbit Polyclonal Antibody (Pab)

Catalog #	Applications:	Reactivity:	Accessions:
AP9557b	WB, E	H	P50120
Concentration:	Size:	Isotype:	Clone Name:
0.25 mg/ml	0.1 mg	Rabbit Ig	RB24213

Application Data:

Calculated MW: 15707 Da



Western blot analysis of RBP2 Antibody (Center) (Cat. #AP9557b) in 293 cell line lysates (35ug/lane). RBP2 (arrow) was detected using the purified Pab.

Gene ID:	Gene Symbol:
5948	RBP2

Other Names:

Cellular retinol-binding protein II, CRBP-II; Retinol-binding protein 2; CRBP2, RBP2

Target/Specificity:

This RBP2 antibody is generated from rabbits immunized with a KLH conjugated synthetic peptide between 63~92 amino acids from the Central region of human RBP2.

Application Notes:

The suggested dilution is:

ELISA 1:1,000

Western blotting 1:100~500

Format:

Purified polyclonal antibody supplied in PBS with 0.09% (W/V) sodium azide. This antibody is purified through a protein A column, followed by peptide affinity purification.

Storage:

Maintain refrigerated at 2-8°C for up to 6 months. For long term storage store at -20°C in

small aliquots to prevent freeze-thaw cycles.

Precautions:

RBP2 Antibody (Center) is for research use only and not for use in diagnostic or therapeutic procedures.
