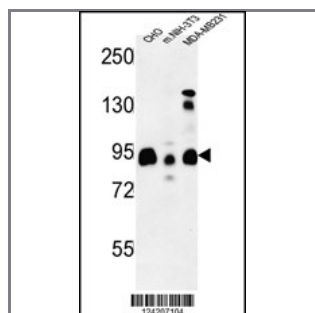


SGIP1 Antibody (N-term)

Peptide Affinity Purified Rabbit Polyclonal Antibody (Pab)

Catalog #	Applications:	Reactivity:	Accessions:
AP9556b	WB, E	H, M	Q9BQI5
Concentration:	Size:	Isotype:	Clone Name:
0.25 mg/ml	0.1 mg	Rabbit Ig	RB24207

Application Data: Calculated MW: 89109 Da



SGIP1 Antibody (N-term) (Cat. #AP9556b) western blot analysis in CHO,MDA-MB231, mouse NIH-3T3 cell line lysates (35ug/lane).This demonstrates the SGIP1 antibody detected the SGIP1 protein (arrow).

Gene ID:	Gene Symbol:
84251	SGIP1

Other Names:

Endophilin-3-interacting protein; SH3-containing GRB2-like protein 3-interacting protein 1; SGIP1

Target/Specificity:

This SGIP1 antibody is generated from rabbits immunized with a KLH conjugated synthetic peptide between 1~30 amino acids from the N-terminal region of human SGIP1.

Application Notes:

The suggested dilution is:
 ELISA 1:1,000
 Western blotting 1:100~500

Format:

Purified polyclonal antibody supplied in PBS with 0.09% (W/V) sodium azide. This antibody is purified through a protein A column, followed by peptide affinity purification.

Storage:

Maintain refrigerated at 2-8°C for up to 6 months. For long term storage store at -20°C in

small aliquots to prevent freeze-thaw cycles.

Precautions:

SGIP1 Antibody (N-term) is for research use only and not for use in diagnostic or therapeutic procedures.
