

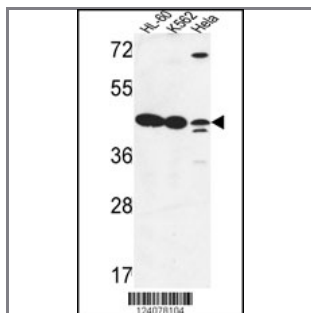
LFNG Antibody (Center)

Peptide Affinity Purified Rabbit Polyclonal Antibody (Pab)

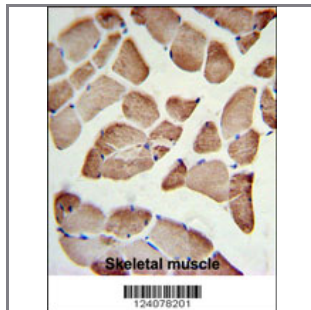
| Catalog # | Applications: | Reactivity: | Accessions: |
|-----------|---------------|-------------|------------------------|
| AP9524c | WB, FC, IHC | H | Q8NES3 |

| Concentration: | Size: | Isotype: | Clone Name: |
|----------------|--------|-----------|-------------|
| 0.25 mg/ml | 0.1 mg | Rabbit Ig | RB24078 |

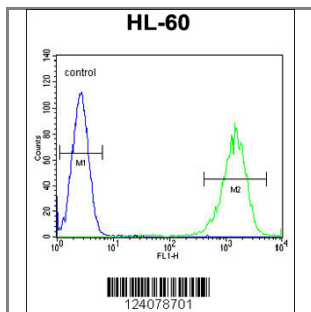
Application Data: Calculated MW: 41773 Da



LFNG Antibody (Center) (Cat. #AP9524c) western blot analysis in HL-60, K562, HeLa cell line lysates (35ug/lane). This demonstrates the LFNG antibody detected the LFNG protein (arrow).



LFNG Antibody (Center) (Cat. #AP9524c) IHC analysis in formalin fixed and paraffin embedded skeletal muscle followed by peroxidase conjugation of the secondary antibody and DAB staining. This data demonstrates the use of the LFNG Antibody (Center) for immunohistochemistry. Clinical relevance has not been evaluated.



LFNG Antibody (Center) (Cat. #AP9524c) flow cytometric analysis of HL-60 cells (right histogram) compared to a negative control cell (left histogram). FITC-conjugated goat-anti-rabbit secondary antibodies were used for the analysis.

| Gene ID: | Gene Symbol: |
|----------------------|--------------|
| 3955 | LFNG |

Other Names:

O-fucosylpeptide 3-beta-N-acetylglucosaminyltransferase; Beta-1,3-N-acetylglucosaminyltransferase
lunatic fringe; LFNG

Target/Specificity:

This LFNG antibody is generated from rabbits immunized with a KLH conjugated synthetic peptide between 93~122 amino acids from the Central region of human LFNG.

Application Notes:

The suggested dilution is:

ELISA 1:1,000

Western blotting 1:100~500

Immunohistochemistry 1:50~100

Flow cytometric 1:10~50

Format:

Purified polyclonal antibody supplied in PBS with 0.09% (W/V) sodium azide. This antibody is purified through a protein A column, followed by peptide affinity purification.

Storage:

Maintain refrigerated at 2-8°C for up to 6 months. For long term storage store at -20°C in small aliquots to prevent freeze-thaw cycles.

Precautions:

LFNG Antibody (Center) is for research use only and not for use in diagnostic or therapeutic procedures.
