

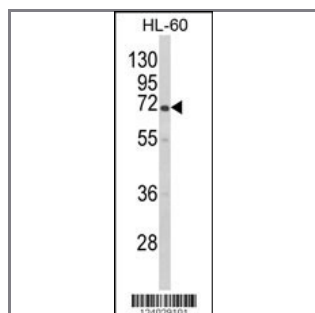
## GBE1 Antibody (Center)

### Peptide Affinity Purified Rabbit Polyclonal Antibody (Pab)

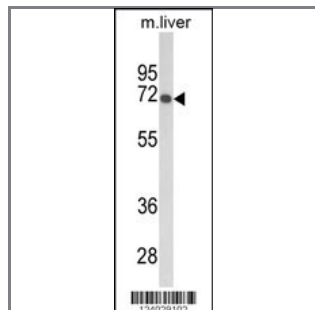
Catalog #	Applications:	Reactivity:	Accessions:
AP9506c	WB, IF, E	H, M	<a href="#">Q04446</a>
Concentration:	Size:	Isotype:	Clone Name:
0.25 mg/ml	0.1 mg	Rabbit Ig	RB24029

#### Application Data:

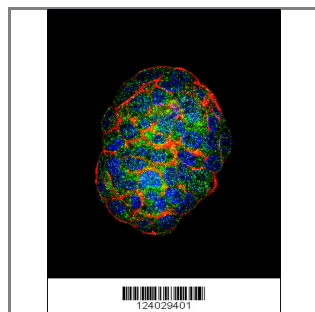
**Calculated MW: 80460 Da**



Western blot analysis of GBE1 Antibody (Center) (Cat. #AP9506c) in HL-60 cell line lysates (35ug/lane). GBE1 (arrow) was detected using the purified Pab;



Western blot analysis of GBE1 Antibody (Center) (Cat. #AP9506c) in mouse liver tissue lysates (35ug/lane). GBE1 (arrow) was detected using the purified Pab.



Confocal immunofluorescent analysis of GBE1 Antibody (Center) (Cat. #AP9506c) with HepG2 cell followed by Alexa Fluor 488-conjugated goat anti-rabbit IgG (green). Actin filaments have been labeled with Alexa Fluor 555 phalloidin (red). DAPI was used to stain the cell nuclear (blue).

Gene ID:	Gene Symbol:
<a href="#">2632</a>	GBE1

#### Other Names:

Brancher enzyme; Glycogen-branching enzyme; 1,4-alpha-glucan-branching enzyme; GBE1

---

**Target/Specificity:**

This GBE1 antibody is generated from rabbits immunized with a KLH conjugated synthetic peptide between 534~564 amino acids from the Central region of human GBE1.

---

**Application Notes:**

The suggested dilution is:

ELISA 1:1,000

Western blotting 1:100~500

Immunofluorescence 1:10~50

---

**Format:**

Purified polyclonal antibody supplied in PBS with 0.09% (W/V) sodium azide. This antibody is purified through a protein A column, followed by peptide affinity purification.

---

**Storage:**

Maintain refrigerated at 2-8°C for up to 6 months. For long term storage store at -20°C in small aliquots to prevent freeze-thaw cycles.

---

**Precautions:**

GBE1 Antibody (Center) is for research use only and not for use in diagnostic or therapeutic procedures.

---