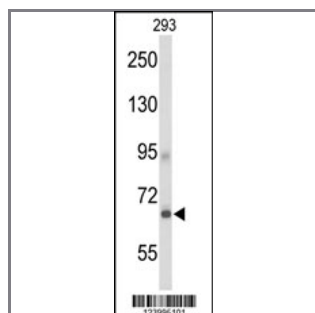


GPR133 Antibody (Center)

Peptide Affinity Purified Rabbit Polyclonal Antibody (Pab)

Catalog #	Applications:	Reactivity:	Accessions:
AP9499c	WB, E	H	Q6QNK2
Concentration:	Size:	Isotype:	Clone Name:
0.25 mg/ml	0.1 mg	Rabbit Ig	RB23995

Application Data:
Calculated MW: 96530 Da


Western blot analysis of GPR133 Antibody (Center) (Cat. #AP9499c) in 293 cell line lysates (35ug/lane). GPR133 (arrow) was detected using the purified Pab.

Gene ID:	Gene Symbol:
283383	GPR133

Other Names:

G-protein coupled receptor PGR25; Probable G-protein coupled receptor 133; PGR25, GPR133

Target/Specificity:

This GPR133 antibody is generated from rabbits immunized with a KLH conjugated synthetic peptide between 477~507 amino acids from the Central region of human GPR133.

Application Notes:

The suggested dilution is:

ELISA 1:1,000

Western blotting 1:100~500

Format:

Purified polyclonal antibody supplied in PBS with 0.09% (W/V) sodium azide. This antibody is purified through a protein A column, followed by peptide affinity purification.

Storage:

Maintain refrigerated at 2-8°C for up to 6 months. For long term storage store at -20°C in

small aliquots to prevent freeze-thaw cycles.

Precautions:

GPR133 Antibody (Center) is for research use only and not for use in diagnostic or therapeutic procedures.
