

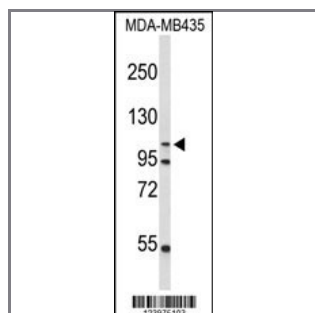
GEN1 Antibody (N-term)

Peptide Affinity Purified Rabbit Polyclonal Antibody (Pab)

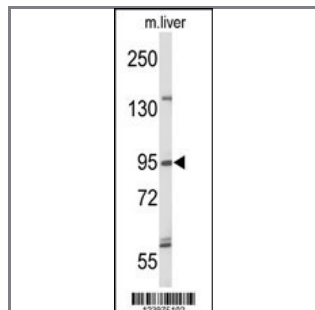
Catalog #	Applications:	Reactivity:	Accessions:
AP9493a	WB, E	H, M	Q17RS7
Concentration:	Size:	Isotype:	Clone Name:
0.25 mg/ml	0.1 mg	Rabbit Ig	RB23975

Application Data:

Calculated MW: 102884 Da



Western blot analysis of GEN1 Antibody (N-term) (Cat. #AP9493a) in MDA-MB435 cell line lysates (35ug/lane). GEN1 (arrow) was detected using the purified Pab;



Western blot analysis of GEN1 Antibody (N-term) (Cat. #AP9493a) in mouse liver tissue lysates (35ug/lane). GEN1 (arrow) was detected using the purified Pab.

Gene ID:	Gene Symbol:
348654	GEN1

Other Names:

Flap endonuclease GEN homolog 1; GEN1

Target/Specificity:

This GEN1 antibody is generated from rabbits immunized with a KLH conjugated synthetic peptide between 67~97 amino acids from the N-terminal region of human GEN1.

Application Notes:

The suggested dilution is:
ELISA 1:1,000

Western blotting 1:100~500

Format:

Purified polyclonal antibody supplied in PBS with 0.09% (W/V) sodium azide. This antibody is purified through a protein A column, followed by peptide affinity purification.

Storage:

Maintain refrigerated at 2-8°C for up to 6 months. For long term storage store at -20°C in small aliquots to prevent freeze-thaw cycles.

Precautions:

GEN1 Antibody (N-term) is for research use only and not for use in diagnostic or therapeutic procedures.
