

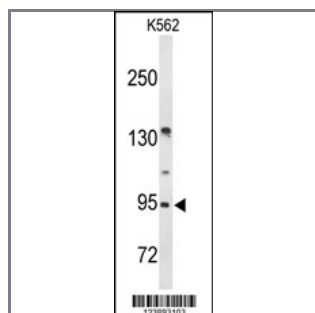
FAM5C Antibody (N-term)

Peptide Affinity Purified Rabbit Polyclonal Antibody (Pab)

Catalog #	Applications:	Reactivity:	Accessions:
AP9487a	WB, E	H	Q76B58
Concentration:	Size:	Isotype:	Clone Name:
0.25 mg/ml	0.1 mg	Rabbit Ig	RB23893

Application Data:

Calculated MW: 88445 Da



Western blot analysis of FAM5C Antibody (N-term) (Cat. #AP9487a) in K562 cell line lysates (35ug/lane). FAM5C (arrow) was detected using the purified Pab.

Gene ID:	Gene Symbol:
339479	FAM5C

Other Names:

DBCCR1-like protein 1; Protein FAM5C; DBCCR1L1, DBCCR1L, FAM5C

Target/Specificity:

This FAM5C antibody is generated from rabbits immunized with a KLH conjugated synthetic peptide between 47~76 amino acids from the N-terminal region of human FAM5C.

Application Notes:

The suggested dilution is:

ELISA 1:1,000

Western blotting 1:100~500

Format:

Purified polyclonal antibody supplied in PBS with 0.09% (W/V) sodium azide. This antibody is purified through a protein A column, followed by peptide affinity purification.

Storage:

Maintain refrigerated at 2-8°C for up to 6 months. For long term storage store at -20°C in

small aliquots to prevent freeze-thaw cycles.

Precautions:

FAM5C Antibody (N-term) is for research use only and not for use in diagnostic or therapeutic procedures.
