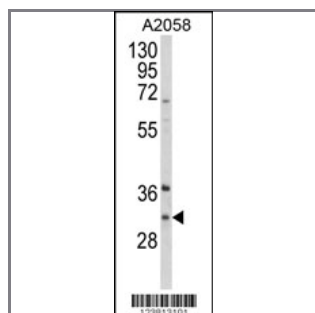


ING5 Antibody (Center)

Peptide Affinity Purified Rabbit Polyclonal Antibody (Pab)

| | | | |
|-----------------------|----------------------|--------------------|------------------------|
| Catalog # | Applications: | Reactivity: | Accessions: |
| AP9485c | WB, E | H | Q8WYH8 |
| Concentration: | Size: | Isotype: | Clone Name: |
| 0.25 mg/ml | 0.1 mg | Rabbit Ig | RB23813 |

Application Data: Calculated MW: 27751 Da



Western blot analysis of ING5 Antibody (Center) (Cat. #AP9485c) in A2058 cell line lysates (35ug/lane). ING5 (arrow) was detected using the purified Pab.

| | |
|-----------------------|---------------------|
| Gene ID: | Gene Symbol: |
| 84289 | ING5 |

Other Names:

p28ING5; Inhibitor of growth protein 5; ING5

Target/Specificity:

This ING5 antibody is generated from rabbits immunized with a KLH conjugated synthetic peptide between 98~127 amino acids from the Central region of human ING5.

Application Notes:

The suggested dilution is:
 ELISA 1:1,000
 Western blotting 1:100~500

Format:

Purified polyclonal antibody supplied in PBS with 0.09% (W/V) sodium azide. This antibody is purified through a protein A column, followed by peptide affinity purification.

Storage:

Maintain refrigerated at 2-8°C for up to 6 months. For long term storage store at -20°C in

small aliquots to prevent freeze-thaw cycles.

Precautions:

ING5 Antibody (Center) is for research use only and not for use in diagnostic or therapeutic procedures.
