

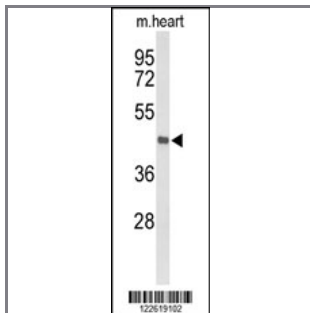
DBC1 Antibody (N-term)

Peptide Affinity Purified Rabbit Polyclonal Antibody (Pab)

Catalog #	Applications:	Reactivity:	Accessions:
AP9464a	WB, E	H, M	O60477
Concentration:	Size:	Isotype:	Clone Name:
0.25 mg/ml	0.1 mg	Rabbit Ig	RB22619

Application Data:

Calculated MW: 37168 Da (isoform 2) Da



Western blot analysis of DBC1 Antibody (N-term) (Cat. #AP9464a) in mouse heart tissue lysates (35ug/lane). DBC1 (arrow) was detected using the purified Pab.

Gene ID:	Gene Symbol:
1620	DBC1

Other Names:

Protein FAM5A; Deleted in bladder cancer protein 1, IB3089A, FAM5A, DBCCR1, DBC1

Target/Specificity:

This DBC1 antibody is generated from rabbits immunized with a KLH conjugated synthetic peptide between 91~120 amino acids from the N-terminal region of human DBC1.

Application Notes:

The suggested dilution is:
ELISA 1:1,000
Western blotting 1:100~500

Format:

Purified polyclonal antibody supplied in PBS with 0.09% (W/V) sodium azide. This antibody is purified through a protein A column, followed by peptide affinity purification.

Storage:

Maintain refrigerated at 2-8°C for up to 6 months. For long term storage store at -20°C in

small aliquots to prevent freeze-thaw cycles.

Precautions:

DBC1 Antibody (N-term) is for research use only and not for use in diagnostic or therapeutic procedures.
