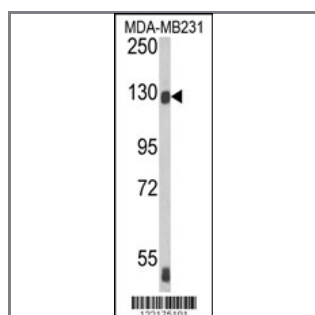


ITA6 Antibody

Peptide Affinity Purified Rabbit Polyclonal Antibody (Pab)

Catalog #	Applications:	Reactivity:	Accessions:
AP9460d	WB, E	H	P23229
Concentration:	Size:	Isotype:	Clone Name:
0.25 mg/ml	0.1 mg	Rabbit Ig	RB22175

Application Data: Calculated MW: 126633 Da



Western blot analysis of ITA6 Antibody (Cat. #AP9460d) in MDA-MB231 cell line lysates (35ug/lane). ITA6 (arrow) was detected using the purified Pab.

Gene ID:	Gene Symbol:
3655	ITGA6

Other Names:

Integrin alpha-6 light chain; Integrin alpha-6 heavy chain; CD_antigen=CD49f; CD49 antigen-like family member F; VLA-6; Integrin alpha-6, ITGA6

Target/Specificity:

This ITA6 antibody is generated from rabbits immunized with ITA6 recombinant protein.

Application Notes:

The suggested dilution is:

ELISA 1:1,000

Western blotting 1:100~500

Format:

Purified polyclonal antibody supplied in PBS with 0.09% (W/V) sodium azide. This antibody is purified through a protein A column, followed by peptide affinity purification.

Storage:

Maintain refrigerated at 2-8°C for up to 6 months. For long term storage store at -20°C in

small aliquots to prevent freeze-thaw cycles.

Precautions:

ITA6 Antibody is for research use only and not for use in diagnostic or therapeutic procedures.
