

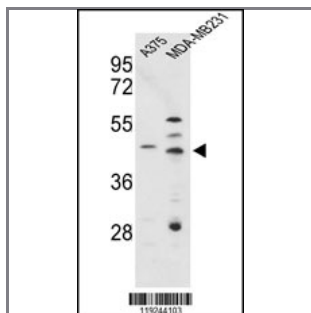
CTSD Antibody (C-term)

Purified Rabbit Polyclonal Antibody (Pab)

Catalog #	Applications:	Reactivity:	Accessions:
AP9447b	WB, E	H	P07339

Concentration:	Size:	Isotype:	Clone Name:
0.25 mg/ml	0.1 mg	Rabbit Ig	RB19244

Application Data: **Calculated MW: 44552 Da**



Western blot analysis of CTSD Antibody (C-term) (Cat. #AP9447b) in A375, MDA-MB231 cell line lysates (35ug/lane). CTSD (arrow) was detected using the purified Pab.

Gene ID:	Gene Symbol:
1509	CTSD

Other Names:

Cathepsin D heavy chain; Cathepsin D light chain; Cathepsin D, CPSD, CTSD

Target/Specificity:

This CTSD antibody is generated from rabbits immunized with a KLH conjugated synthetic peptide between 383~412 amino acids from the C-terminal region of human CTSD.

Application Notes:

The suggested dilution is:

ELISA 1:1,000

Western blotting 1:50~100

Format:

Purified polyclonal antibody supplied in PBS with 0.09% (W/V) sodium azide. This antibody is prepared by Saturated Ammonium Sulfate (SAS) precipitation followed by dialysis against PBS.

Storage:

Maintain refrigerated at 2-8°C for up to 6 months. For long term storage store at -20°C in

small aliquots to prevent freeze-thaw cycles.

Precautions:

CTSD Antibody (C-term) is for research use only and not for use in diagnostic or therapeutic procedures.
