

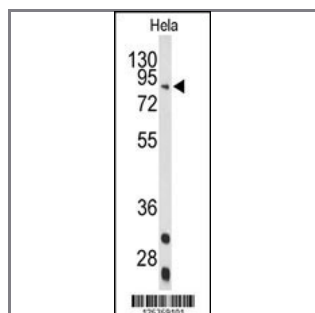
STRA6 Antibody (C-term)

Peptide Affinity Purified Rabbit Polyclonal Antibody (Pab)

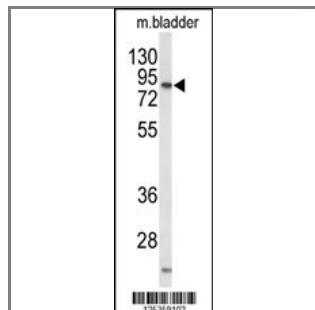
Catalog #	Applications:	Reactivity:	Accessions:
AP9433b	WB, IHC, E	H, M	Q9BX79
Concentration:	Size:	Isotype:	Clone Name:
0.25 mg/ml	0.1 mg	Rabbit Ig	RB25359

Application Data:

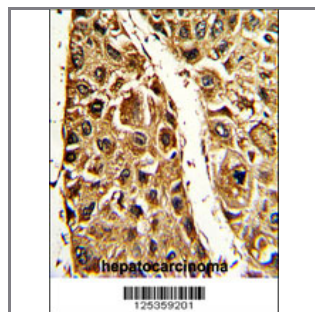
Calculated MW: 73503 Da



Western blot analysis of STRA6 Antibody (C-term) (Cat. #AP9433b) in HeLa cell line lysates (35ug/lane). UBAC1 (arrow) was detected using the purified Pab;



Western blot analysis of STRA6 Antibody (C-term) (Cat. #AP9433b) in mouse bladder tissue lysates (35ug/lane). STRA6 (arrow) was detected using the purified Pab.



Formalin-fixed and paraffin-embedded human hepatocarcinoma with STRA6 Antibody (C-term), which was peroxidase-conjugated to the secondary antibody, followed by DAB staining. This data demonstrates the use of this antibody for immunohistochemistry; clinical relevance has not been evaluated.

Gene ID:	Gene Symbol:
64220	STRA6

Other Names:

Stimulated by retinoic acid gene 6 protein homolog, UNQ3126/PRO10282/PRO19578, PP14296, STRA6

Target/Specificity:

This STRA6 antibody is generated from rabbits immunized with a KLH conjugated synthetic peptide between 593~622 amino acids from the C-terminal region of human STRA6.

Application Notes:

The suggested dilution is:

ELISA 1:1,000

Western blotting 1:100~500

Immunohistochemistry 1:50~100

Format:

Purified polyclonal antibody supplied in PBS with 0.09% (W/V) sodium azide. This antibody is purified through a protein A column, followed by peptide affinity purification.

Storage:

Maintain refrigerated at 2-8°C for up to 6 months. For long term storage store at -20°C in small aliquots to prevent freeze-thaw cycles.

Precautions:

STRA6 Antibody (C-term) is for research use only and not for use in diagnostic or therapeutic procedures.
