

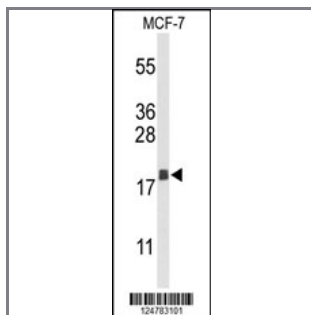
AGR3 Antibody (C-term)

Peptide Affinity Purified Rabbit Polyclonal Antibody (Pab)

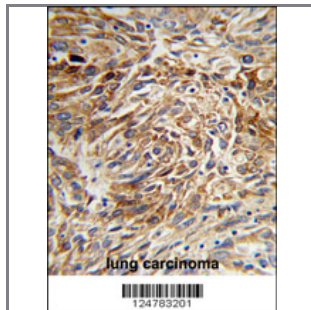
Catalog #	Applications:	Reactivity:	Accessions:
AP9424b	WB, FC, IHC, E	H	Q8TD06

Concentration:	Size:	Isotype:	Clone Name:
0.25 mg/ml	0.1 mg	Rabbit Ig	RB24783

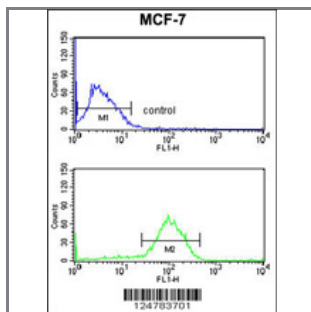
Application Data: Calculated MW: 19171 Da



Western blot analysis of AGR3 Antibody (C-term) (Cat. #AP9424b) in MCF-7 cell line lysates (35ug/lane). AGR3 (arrow) was detected using the purified Pab.



Formalin-fixed and paraffin-embedded human lung carcinoma reacted with AGR3 Antibody (C-term), which was peroxidase-conjugated to the secondary antibody, followed by DAB staining. This data demonstrates the use of this antibody for immunohistochemistry; clinical relevance has not been evaluated.



AGR3 Antibody (C-term) (Cat. #AP9424b) flow cytometry analysis of MCF-7 cells (bottom histogram) compared to a negative control cell (top histogram). FITC-conjugated goat-anti-rabbit secondary antibodies were used for the analysis.

Gene ID:	Gene Symbol:
155465	AGR3

Other Names:

Breast cancer membrane protein 11; Anterior gradient protein 3 homolog, hAG-3; AG-3; AG3, UNQ642/PRO1272, BCMP11, AGR3

Target/Specificity:

This AGR3 antibody is generated from rabbits immunized with a KLH conjugated synthetic peptide between 126~155 amino acids from the C-terminal region of human AGR3.

Application Notes:

The suggested dilution is:

ELISA 1:1,000

Western blotting 1:100~500

Immunohistochemistry 1:50~100

Flow cytometry 1:10~50

Format:

Purified polyclonal antibody supplied in PBS with 0.09% (W/V) sodium azide. This antibody is purified through a protein A column, followed by peptide affinity purification.

Storage:

Maintain refrigerated at 2-8°C for up to 6 months. For long term storage store at -20°C in small aliquots to prevent freeze-thaw cycles.

Precautions:

AGR3 Antibody (C-term) is for research use only and not for use in diagnostic or therapeutic procedures.
