

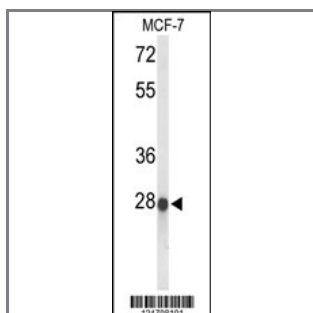
ABHDB Antibody (Center)

Peptide Affinity Purified Rabbit Polyclonal Antibody (Pab)

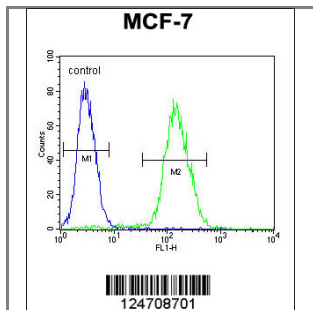
Catalog #	Applications:	Reactivity:	Accessions:
AP9420c	WB, FC, E	H	Q8NFV4
Concentration:	Size:	Isotype:	Clone Name:
0.25 mg/ml	0.1 mg	Rabbit Ig	RB24708

Application Data:

Calculated MW: 34690 Da



Western blot analysis of ABHDB Antibody (Center) (Cat. #AP9420c) in MCF-7 cell line lysates (35ug/lane). ABHDB (arrow) was detected using the purified Pab.



ABHDB Antibody (Center) (Cat. #AP9420c) flow cytometric analysis of MCF-7 cells (right histogram) compared to a negative control cell (left histogram). FITC-conjugated goat-anti-rabbit secondary antibodies were used for the analysis.

Gene ID:	Gene Symbol:
83451	ABHD11

Other Names:

Williams-Beuren syndrome chromosomal region 21 protein; Abhydrolase domain-containing protein 11, PP1226, WBSCR21, ABHD11

Target/Specificity:

This ABHDB antibody is generated from rabbits immunized with a KLH conjugated synthetic peptide between 183~213 amino acids from the Central region of human ABHDB.

Application Notes:

The suggested dilution is:

ELISA 1:1,000
Western blotting 1:100~500
Flow cytometric 1:10~50

Format:

Purified polyclonal antibody supplied in PBS with 0.09% (W/V) sodium azide. This antibody is purified through a protein A column, followed by peptide affinity purification.

Storage:

Maintain refrigerated at 2-8°C for up to 6 months. For long term storage store at -20°C in small aliquots to prevent freeze-thaw cycles.

Precautions:

ABHDB Antibody (Center) is for research use only and not for use in diagnostic or therapeutic procedures.
