

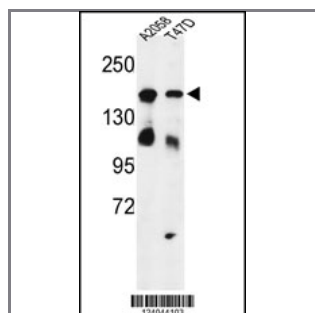
HDLBP Antibody (Center)

Peptide Affinity Purified Rabbit Polyclonal Antibody (Pab)

Catalog #	Applications:	Reactivity:	Accessions:
AP9415c	WB, IHC, E	H	Q00341
Concentration:	Size:	Isotype:	Clone Name:
0.25 mg/ml	0.1 mg	Rabbit Ig	RB24044

Application Data:

Calculated MW: 141456 Da



Western blot analysis of HDLBP Antibody (Center) (Cat. #AP9415c) in A2058, T47D cell line lysates (35ug/lane). HDLBP (arrow) was detected using the purified Pab.



Formalin-fixed and paraffin-embedded human lung carcinoma reacted with HDLBP Antibody (Center), which was peroxidase-conjugated to the secondary antibody, followed by DAB staining. This data demonstrates the use of this antibody for immunohistochemistry; clinical relevance has not been evaluated.

Gene ID:	Gene Symbol:
3069	HDLBP

Other Names:

High density lipoprotein-binding protein, HDL-binding protein; Vigilin, VGL, HBP, HDLBP

Target/Specificity:

This HDLBP antibody is generated from rabbits immunized with a KLH conjugated synthetic peptide between 770~800 amino acids from the Central region of human HDLBP.

Application Notes:

The suggested dilution is:
ELISA 1:1,000

Western blotting 1:100~500
Immunohistochemistry 1:50~100

Format:

Purified polyclonal antibody supplied in PBS with 0.09% (W/V) sodium azide. This antibody is purified through a protein A column, followed by peptide affinity purification.

Storage:

Maintain refrigerated at 2-8°C for up to 6 months. For long term storage store at -20°C in small aliquots to prevent freeze-thaw cycles.

Precautions:

HDLBP Antibody (Center) is for research use only and not for use in diagnostic or therapeutic procedures.
