

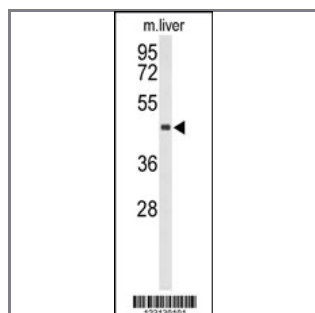
CHIA Antibody (N-term)

Peptide Affinity Purified Rabbit Polyclonal Antibody (Pab)

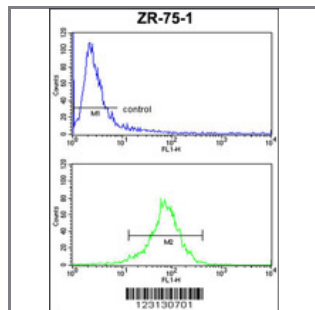
| Catalog # | Applications: | Reactivity: | Accessions: |
|----------------|---------------|-------------|------------------------|
| AP9394a | WB, FC, E | H, M | Q9BZP6 |
| Concentration: | Size: | Isotype: | Clone Name: |
| 0.25 mg/ml | 0.1 mg | Rabbit Ig | RB23130 |

Application Data:

Calculated MW: 52271 Da



Western blot analysis of CHIA Antibody (N-term) (Cat. #AP9394a) in mouse liver tissue lysates (35ug/lane). CHIA (arrow) was detected using the purified Pab.



CHIA Antibody (N-term) (Cat.#AP9394a) FC analysis of ZR-75-1 cells (bottom histogram) compared to a negative control cell (top histogram). FITC-conjugated goat-anti-rabbit secondary antibodies were used for the analysis.

| Gene ID: | Gene Symbol: |
|-----------------------|--------------|
| 27159 | CHIA |

Other Names:

Lung-specific protein TSA1902; Acidic mammalian chitinase, AMCase，CHIA

Target/Specificity:

This CHIA antibody is generated from rabbits immunized with a KLH conjugated synthetic peptide selected from the N-terminal region of human CHIA.

Application Notes:

The suggested dilution is:
ELISA 1:1,000

Western blotting 1:100~500

Flow cytometric 1:10~50

Format:

Purified polyclonal antibody supplied in PBS with 0.09% (W/V) sodium azide. This antibody is purified through a protein A column, followed by peptide affinity purification.

Storage:

Maintain refrigerated at 2-8°C for up to 6 months. For long term storage store at -20°C in small aliquots to prevent freeze-thaw cycles.

Precautions:

CHIA Antibody (N-term) is for research use only and not for use in diagnostic or therapeutic procedures.
