

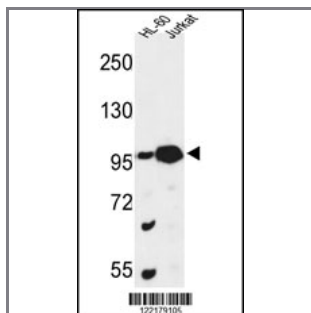
CSPP1 Antibody (N-term)

Peptide Affinity Purified Rabbit Polyclonal Antibody (Pab)

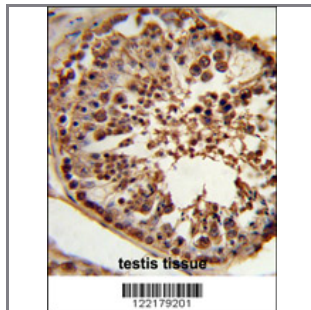
Catalog #	Applications:	Reactivity:	Accessions:
AP9386a	WB, FC, IHC, E	H	Q1MSJ5

Concentration:	Size:	Isotype:	Clone Name:
0.25 mg/ml	0.1 mg	Rabbit Ig	RB22179

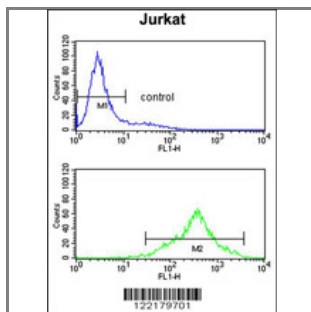
Application Data: Calculated MW: 141751 Da Da



Western blot analysis of CSPP1 Antibody (N-term) (Cat. #AP9386a) in HL-60, Jurkat cell line lysates (35ug/lane). CSPP1 (arrow) was detected using the purified Pab.



Formalin-fixed and paraffin-embedded human testis tissue reacted with CSPP1 Antibody (N-term), which was peroxidase-conjugated to the secondary antibody, followed by DAB staining. This data demonstrates the use of this antibody for immunohistochemistry; clinical relevance has not been evaluated.



CSPP1 Antibody (N-term) (Cat. #AP9386a) flow cytometry analysis of Jurkat cells (bottom histogram) compared to a negative control cell (top histogram). FITC-conjugated goat-anti-rabbit secondary antibodies were used for the analysis.

Gene ID:	Gene Symbol:
79848	CSPP1

Other Names:

Centrosome and spindle pole-associated protein 1, CSPP, CSPP1

Target/Specificity:

This CSPP1 antibody is generated from rabbits immunized with a KLH conjugated synthetic peptide between 276~306 amino acids from the N-terminal region of human CSPP1.

Application Notes:

The suggested dilution is:

ELISA 1:1,000

Western blotting 1:100~500

Immunohistochemistry 1:50~100

Flow cytometry 1:10~50

Format:

Purified polyclonal antibody supplied in PBS with 0.09% (W/V) sodium azide. This antibody is purified through a protein A column, followed by peptide affinity purification.

Storage:

Maintain refrigerated at 2-8°C for up to 6 months. For long term storage store at -20°C in small aliquots to prevent freeze-thaw cycles.

Precautions:

CSPP1 Antibody (N-term) is for research use only and not for use in diagnostic or therapeutic procedures.
