

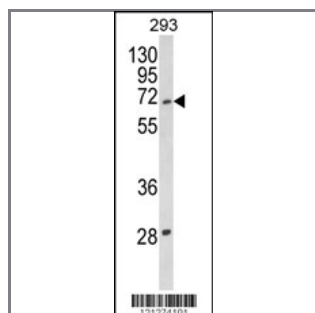
TP73 Antibody (Center)

Peptide Affinity Purified Rabbit Polyclonal Antibody (Pab)

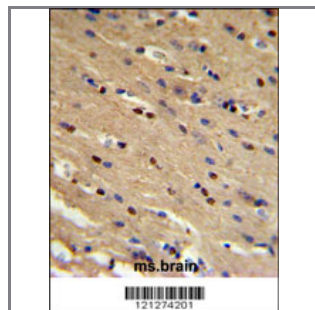
Catalog #	Applications:	Reactivity:	Accessions:
AP8881c	WB, IF, FC, IHC, E	H	O15350

Concentration:	Size:	Isotype:	Clone Name:
0.25 mg/ml	0.1 mg	Rabbit Ig	RB21274

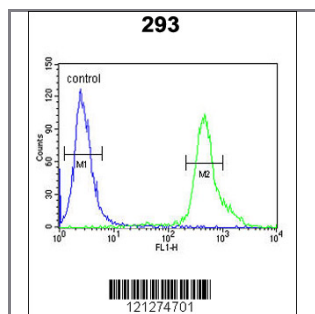
Application Data: Calculated MW: 69623 Da



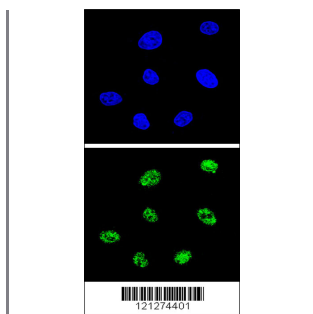
Western blot analysis of TP73 Antibody (Center) (Cat. #AP8881c) in 293 cell line lysates (35ug/lane). TP73 (arrow) was detected using the purified Pab.



TP73 Antibody (Center) (Cat. #AP8881c) IHC analysis in formalin fixed and paraffin embedded mouse brain followed by peroxidase conjugation of the secondary antibody and DAB staining. This data demonstrates the use of the TP73 Antibody (Center) for immunohistochemistry. Clinical relevance has not been evaluated.



TP73 Antibody (Center) (Cat. #AP8881c) flow cytometric analysis of 293 cells (right histogram) compared to a negative control cell (left histogram). FITC-conjugated goat-anti-rabbit secondary antibodies were used for the analysis.



Confocal immunofluorescent analysis of TP73 Antibody (Center) (Cat. #AP8881c) with 293 cell followed by Alexa Fluor® 488-conjugated goat anti-rabbit IgG (green). DAPI was used to stain the cell nuclear (blue).

Gene ID:

7161

Gene Symbol:

TP73

Other Names:

p53-related protein; p53-like transcription factor; Tumor protein p73; TP73, P73

Target/Specificity:

This TP73 antibody is generated from rabbits immunized with a KLH conjugated synthetic peptide between 295~325 amino acids from the Center region of human TP73.

Application Notes:

The suggested dilution is:

ELISA 1:1,000

Western blotting 1:100~500

Immunohistochemistry 1:50~100

Flow cytometric 1:10~50

Immunofluorescence 1:10~50

Format:

Purified polyclonal antibody supplied in PBS with 0.09% (W/V) sodium azide. This antibody is purified through a protein A column, followed by peptide affinity purification.

Storage:

Maintain refrigerated at 2-8°C for up to 6 months. For long term storage store at -20°C in small aliquots to prevent freeze-thaw cycles.

Precautions:

TP73 Antibody (Center) is for research use only and not for use in diagnostic or therapeutic procedures.
