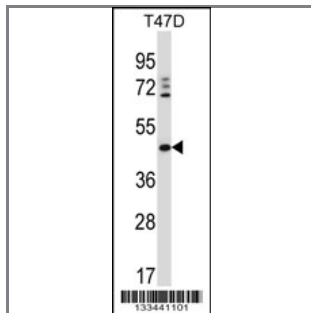


DEGS1 Antibody (N-term)

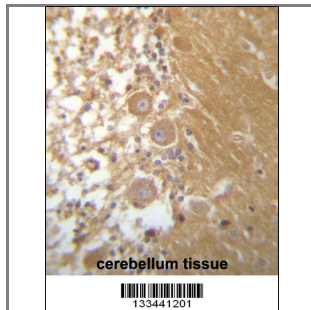
Peptide Affinity Purified Rabbit Polyclonal Antibody (Pab)

Catalog #	Applications:	Reactivity:	Accessions:
AP13411a	WB, IHC, E	H	O15121 , NP_003667.1
Concentration:	Size:	Isotype:	Clone Name:
0.25 mg/ml	0.1 mg	Rabbit Ig	RB33441

Application Data: Calculated MW: 37866 Da



DEGS1 Antibody (N-term) (Cat. #AP13411a) western blot analysis in T47D cell line lysates (35ug/lane). This demonstrates the DEGS1 antibody detected the DEGS1 protein (arrow).



DEGS1 Antibody (N-term) (Cat. #AP13411a) immunohistochemistry analysis in formalin fixed and paraffin embedded human cerebellum tissue followed by peroxidase conjugation of the secondary antibody and DAB staining. This data demonstrates the use of DEGS1 Antibody (N-term) for immunohistochemistry. Clinical relevance has not been evaluated.

Gene ID:	Gene Symbol:
8560	DEGS1

Other Names:

Sphingolipid delta(4)-desaturase DES1;DEGS1;DES1; MLD

Target/Specificity:

This DEGS1 antibody is generated from rabbits immunized with a KLH conjugated synthetic peptide between 1-30 amino acids from the N-terminal region of human DEGS1.

Application Notes:

The suggested dilution is:
ELISA 1:1,000

Western blotting 1:100~500
Immunohistochemistry 1:10~50

Format:

Purified polyclonal antibody supplied in PBS with 0.09% (W/V) sodium azide. This antibody is purified through a protein A column, followed by peptide affinity purification.

Storage:

DEGS1 Antibody (N-term) can be refrigerated at 2-8°C for up to 6 months. For long term storage, place the at -20°C.

Precautions:

DEGS1 Antibody (N-term) is for research use only and not for use in diagnostic or therapeutic procedures.
