

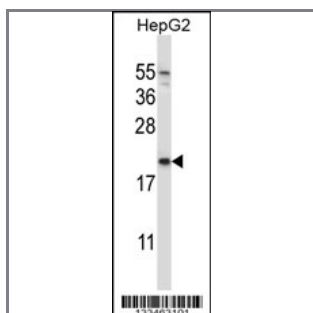
NDUFAF2 Antibody (Center)

Peptide Affinity Purified Rabbit Polyclonal Antibody (Pab)

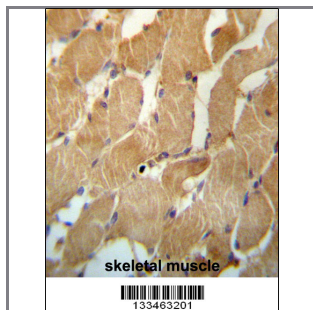
Catalog #	Applications:	Reactivity:	Accessions:
AP13341c	WB, IHC, E	H	Q8N183 , NP_777549.1
Concentration:	Size:	Isotype:	Clone Name:
0.25 mg/ml	0.1 mg	Rabbit Ig	RB33463

Application Data:

Calculated MW: 19856 Da



NDUFAF2 Antibody (Center) (Cat. #AP13341c) western blot analysis in HepG2 cell line lysates (35ug/lane). This demonstrates the NDUFAF2 antibody detected the NDUFAF2 protein (arrow).



NDUFAF2 Antibody (Center) (Cat. #AP13341c) immunohistochemistry analysis in formalin fixed and paraffin embedded human skeletal muscle followed by peroxidase conjugation of the secondary antibody and DAB staining. This data demonstrates the use of NDUFAF2 Antibody (Center) for immunohistochemistry. Clinical relevance has not been evaluated.

Gene ID:	Gene Symbol:
91942	NDUFAF2

Other Names:

Mimitin, mitochondrial;NDUFAF2;NDUFA12L

Target/Specificity:

This NDUFAF2 antibody is generated from rabbits immunized with a KLH conjugated synthetic peptide between 70-99 amino acids from the Central region of human NDUFAF2.

Application Notes:

The suggested dilution is:
ELISA 1:1,000

Western blotting 1:100~500
Immunohistochemistry 1:10~50

Format:

Purified polyclonal antibody supplied in PBS with 0.09% (W/V) sodium azide. This antibody is purified through a protein A column, followed by peptide affinity purification.

Storage:

NDUFAF2 Antibody (Center) can be refrigerated at 2-8°C for up to 6 months. For long term storage, place the at -20°C.

Precautions:

NDUFAF2 Antibody (Center) is for research use only and not for use in diagnostic or therapeutic procedures.
