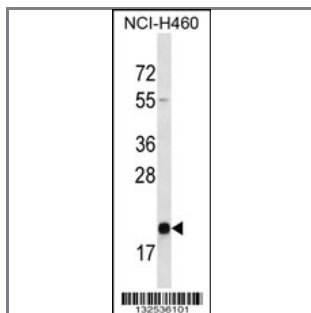


TMED2 Antibody (N-term)

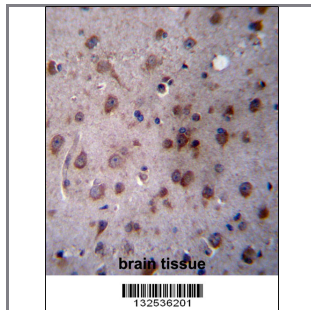
Peptide Affinity Purified Rabbit Polyclonal Antibody (Pab)

Catalog #	Applications:	Reactivity:	Accessions:
AP13140a	WB, IHC, E	H	NP_006806.1 , Q15363
Concentration:	Size:	Isotype:	Clone Name:
0.25 mg/ml	0.1 mg	Rabbit Ig	RB32536

Application Data: Calculated MW: 22761 Da



TMED2 Antibody (N-term) (Cat. #AP13140a) western blot analysis in NCI-H460 cell line lysates (35ug/lane). This demonstrates the TMED2 antibody detected the TMED2 protein (arrow).



TMED2 Antibody (N-term) (Cat. #AP13140a) immunohistochemistry analysis in formalin fixed and paraffin embedded human brain tissue followed by peroxidase conjugation of the secondary antibody and DAB staining. This data demonstrates the use of TMED2 Antibody (N-term) for immunohistochemistry. Clinical relevance has not been evaluated.

Gene ID:	Gene Symbol:
10959	TMED2

Other Names:

Transmembrane emp24 domain-containing protein 2; TMED2; RNP24

Target/Specificity:

This TMED2 antibody is generated from rabbits immunized with a KLH conjugated synthetic peptide between 49-79 amino acids from the N-terminal region of human TMED2.

Application Notes:

The suggested dilution is:
ELISA 1:1,000

Western blotting 1:100~500
Immunohistochemistry 1:10~50

Format:

Purified polyclonal antibody supplied in PBS with 0.09% (W/V) sodium azide. This antibody is purified through a protein A column, followed by peptide affinity purification.

Storage:

TMED2 Antibody (N-term) can be refrigerated at 2-8°C for up to 6 months. For long term storage, place the at -20°C.

Precautions:

TMED2 Antibody (N-term) is for research use only and not for use in diagnostic or therapeutic procedures.
