

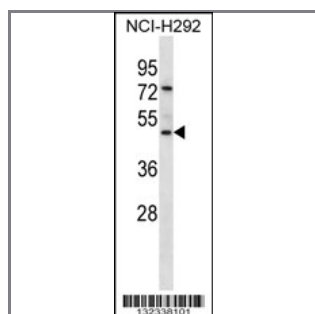
## GP2 Antibody (N-term)

### Peptide Affinity Purified Rabbit Polyclonal Antibody (Pab)

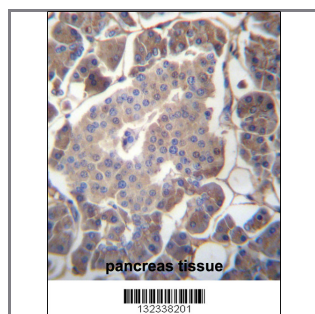
Catalog #	Applications:	Reactivity:	Accessions:
AP13123a	WB, IHC, E	H	<a href="#">NP_001007241.2</a> , <a href="#">NP_001493.2</a> , <a href="#">NP_001007243.2</a> , <a href="#">NP_001007242.2</a> , <a href="#">P55259</a>
Concentration:	Size:	Isotype:	Clone Name:
0.25 mg/ml	0.1 mg	Rabbit Ig	RB32338

#### Application Data:

Calculated MW: 59480 Da



GP2 Antibody (N-term) (Cat. #AP13123a) western blot analysis in NCI-H292 cell line lysates (35ug/lane). This demonstrates the GP2 antibody detected the GP2 protein (arrow).



GP2 Antibody (N-term) (Cat. #AP13123a) immunohistochemistry analysis in formalin fixed and paraffin embedded human pancreas tissue followed by peroxidase conjugation of the secondary antibody and DAB staining. This data demonstrates the use of GP2 Antibody (N-term) for immunohistochemistry. Clinical relevance has not been evaluated.

Gene ID:	Gene Symbol:
<a href="#">2813</a>	GP2

#### Other Names:

Pancreatic secretory granule membrane major glycoprotein GP2;GP2;

#### Target/Specificity:

This GP2 antibody is generated from rabbits immunized with a KLH conjugated synthetic peptide between 54-85 amino acids from the N-terminal region of human GP2.

**Application Notes:**

The suggested dilution is:

ELISA 1:1,000

Western blotting 1:100~500

Immunohistochemistry 1:10~50

---

**Format:**

Purified polyclonal antibody supplied in PBS with 0.09% (W/V) sodium azide. This antibody is purified through a protein A column, followed by peptide affinity purification.

---

**Storage:**

GP2 Antibody (N-term) can be refrigerated at 2-8°C for up to 6 months. For long term storage, place the at -20°C.

---

**Precautions:**

GP2 Antibody (N-term) is for research use only and not for use in diagnostic or therapeutic procedures.

---