

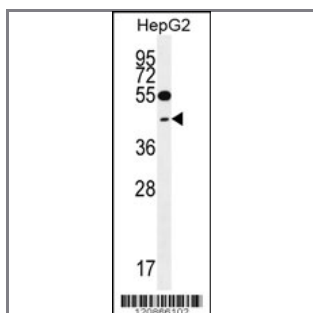
TXNL2 Antibody (N-term)

Peptide Affinity Purified Rabbit Polyclonal Antibody (Pab)

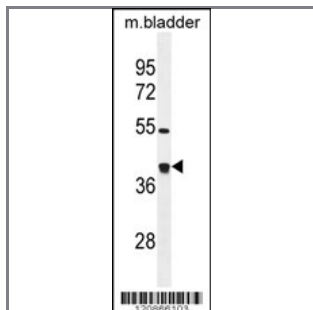
Catalog #	Applications:	Reactivity:	Accessions:
AP12099a	WB, FC, E	H , M	NP_006532.2 , O76003
Concentration:	Size:	Isotype:	Clone Name:
0.25 mg/ml	0.1 mg	Rabbit Ig	RB20866

Application Data:

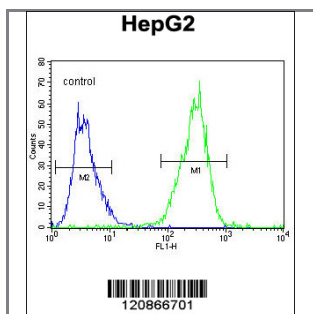
Calculated MW: 37432 Da



TXNL2 Antibody (N-term) (Cat. #AP12099a) western blot analysis in HepG2 cell line lysates (35ug/lane). This demonstrates the TXNL2 antibody detected the TXNL2 protein (arrow).



TXNL2 Antibody (N-term) (Cat. #AP12099a) western blot analysis in mouse bladder tissue lysates (35ug/lane). This demonstrates the TXNL2 antibody detected the TXNL2 protein (arrow).



TXNL2 Antibody (N-term) (Cat. #AP12099a) flow cytometric analysis of HepG2 cells (right histogram) compared to a negative control cell (left histogram). FITC-conjugated goat-anti-rabbit secondary antibodies were used for the analysis.

Gene ID: [10539](#)
Gene Symbol: GLRX3

Other Names:

GLRX3,Glutaredoxin-3,PICOT; TXNL2

Target/Specificity:

This TXNL2 antibody is generated from rabbits immunized with a KLH conjugated synthetic peptide between 88-118 amino acids from the N-terminal region of human TXNL2.

Application Notes:

The suggested dilution is:

ELISA 1:1,000

Western blotting 1:100~500

Flow cytometric 1:10~50

Format:

Purified polyclonal antibody supplied in PBS with 0.09% (W/V) sodium azide. This antibody is purified through a protein A column, followed by peptide affinity purification.

Storage:

Maintain refrigerated at 2-8°C for up to 6 months. For long term storage store at -20°C in small aliquots to prevent freeze-thaw cycles.

Precautions:

TXNL2 Antibody (N-term) is for research use only and not for use in diagnostic or therapeutic procedures.
