

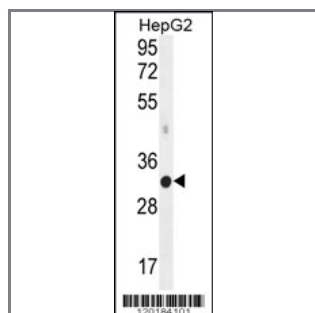
MED6 Antibody (C-term)

Peptide Affinity Purified Rabbit Polyclonal Antibody (Pab)

Catalog #	Applications:	Reactivity:	Accessions:
AP12093b	WB, E	H	NP_005457.2 , O75586
Concentration:	Size:	Isotype:	Clone Name:
0.25 mg/ml	0.1 mg	Rabbit Ig	RB20184

Application Data:

Calculated MW: 28425 Da



MED6 Antibody (C-term) (Cat. #AP12093b) western blot analysis in HepG2 cell line lysates (35ug/lane). This demonstrates the MED6 antibody detected the MED6 protein (arrow).

Gene ID:	Gene Symbol:
10001	MED6

Other Names:

MED6, Mediator of RNA polymerase II transcription subunit 6, ARC33

Target/Specificity:

This MED6 antibody is generated from rabbits immunized with a KLH conjugated synthetic peptide between 214-246 amino acids from the C-terminal region of human MED6.

Application Notes:

The suggested dilution is:
 ELISA 1:1,000
 Western blotting 1:100~500

Format:

Purified polyclonal antibody supplied in PBS with 0.09% (W/V) sodium azide. This antibody is purified through a protein A column, followed by peptide affinity purification.

Storage:

Maintain refrigerated at 2-8°C for up to 6 months. For long term storage store at -20°C in

small aliquots to prevent freeze-thaw cycles.

Precautions:

MED6 Antibody (C-term) is for research use only and not for use in diagnostic or therapeutic procedures.
