

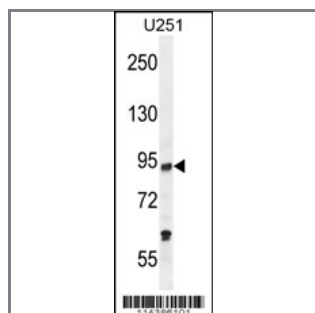
## PCAF Antibody (C-term)

### Purified Rabbit Polyclonal Antibody (Pab)

<b>Catalog #</b>	<b>Applications:</b>	<b>Reactivity:</b>	<b>Accessions:</b>
AP12075b	WB, E	H	<a href="#">NP_003875.3</a> , <a href="#">Q92831</a>
<b>Concentration:</b>	<b>Size:</b>	<b>Isotype:</b>	<b>Clone Name:</b>
0.25 mg/ml	0.1 mg	Rabbit Ig	RB14386

#### Application Data:

**Calculated MW: 93013 Da**



PCAF Antibody (C-term) (Cat. #AP12075b) western blot analysis in U251 cell line lysates (35ug/lane). This demonstrates the PCAF antibody detected the PCAF protein (arrow).

<b>Gene ID:</b>	<b>Gene Symbol:</b>
<a href="#">8850</a>	KAT2B

#### Other Names:

KAT2B, Histone acetyltransferase KAT2B, PCAF

#### Target/Specificity:

This PCAF antibody is generated from rabbits immunized with a KLH conjugated synthetic peptide between 802-832 amino acids from the C-terminal region of human PCAF.

#### Application Notes:

The suggested dilution is:

ELISA 1:1,000

Western blotting 1:50~100

#### Format:

Purified polyclonal antibody supplied in PBS with 0.09% (W/V) sodium azide. This antibody is prepared by Saturated Ammonium Sulfate (SAS) precipitation followed by dialysis against PBS.

#### Storage:

Maintain refrigerated at 2-8°C for up to 6 months. For long term storage store at -20°C in

small aliquots to prevent freeze-thaw cycles.

---

**Precautions:**

PCAF Antibody (C-term) is for research use only and not for use in diagnostic or therapeutic procedures.

---