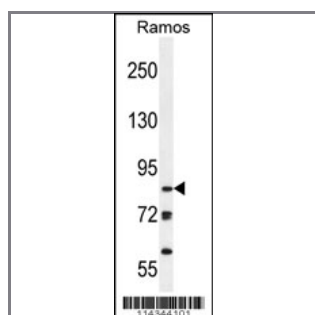


JHDM2b Antibody (Center)

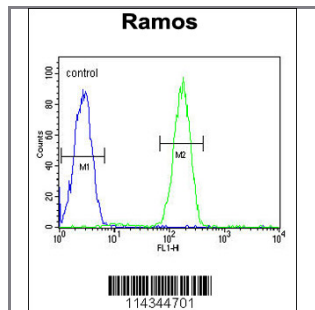
Purified Rabbit Polyclonal Antibody (Pab)

Catalog #	Applications:	Reactivity:	Accessions:
AP12070c	WB, FC, E	H	Q7LBC6 , NP_057688.2
Concentration:	Size:	Isotype:	Clone Name:
0.25 mg/ml	0.1 mg	Rabbit Ig	RB14344

Application Data: **Calculated MW: 84kd Isoform 3. 191,581 Da**



JHDM2b Antibody (Center) (Cat. #AP12070c) western blot analysis in Ramos cell line lysates (35ug/lane). This demonstrates the JHDM2b antibody detected the JHDM2b protein (arrow).



JHDM2b Antibody (Center) (Cat. #AP12070c) flow cytometric analysis of Ramos cells (right histogram) compared to a negative control cell (left histogram). FITC-conjugated goat-anti-rabbit secondary antibodies were used for the analysis.

Gene ID: [51780](#) **Gene Symbol:** KDM3B

Other Names:

C5orf7, JHDM2B, JMJD1B, KIAA1082

Target/Specificity:

This JHDM2b antibody is generated from rabbits immunized with a KLH conjugated synthetic peptide between 876-905 amino acids from the Central region of human JHDM2b.

Application Notes:

The suggested dilution is:
ELISA 1:1,000

Western blotting 1:50~100

Flow cytometric 1:10~50

Format:

Purified polyclonal antibody supplied in PBS with 0.09% (W/V) sodium azide. This antibody is prepared by Saturated Ammonium Sulfate (SAS) precipitation followed by dialysis against PBS.

Storage:

Maintain refrigerated at 2-8°C for up to 6 months. For long term storage store at -20°C in small aliquots to prevent freeze-thaw cycles.

Precautions:

JHDM2b Antibody (Center) is for research use only and not for use in diagnostic or therapeutic procedures.
