

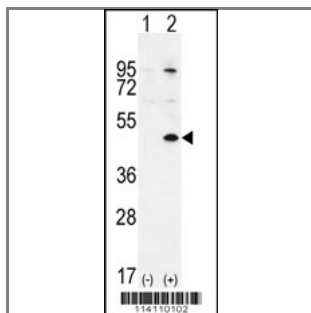
TGIF1 Antibody (Center L223)

Purified Rabbit Polyclonal Antibody (Pab)

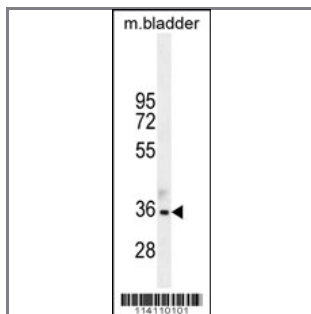
Catalog #	Applications:	Reactivity:	Accessions:
AP12061c	WB, E	H , M	Q15583 , NP_003235.1 , NP_733796.2

Concentration:	Size:	Isotype:	Clone Name:
0.25 mg/ml	0.1 mg	Rabbit Ig	RB14110

Application Data: Calculated MW: 43013 Da



Western blot analysis of TGIF1 (arrow) using rabbit polyclonal TGIF1 Antibody (Center L223) (Cat. #AP12061c). 293 cell lysates (2 ug/lane) either nontransfected (Lane 1) or transiently transfected (Lane 2) with the TGIF1 gene.



TGIF1 Antibody (Center L223) (Cat. #AP12061c) western blot analysis in mouse bladder tissue lysates (35ug/lane). This demonstrates the TGIF1 antibody detected the TGIF1 protein (arrow).

Gene ID:	Gene Symbol:
7050	TGIF1

Other Names:

TGIF1, Homeobox protein TGIF1, TGIF

Target/Specificity:

This TGIF1 antibody is generated from rabbits immunized with a KLH conjugated synthetic peptide between 215-245 amino acids from the Central region of human TGIF1.

Application Notes:

The suggested dilution is:

ELISA 1:1,000

Western blotting 1:50~100

Format:

Purified polyclonal antibody supplied in PBS with 0.09% (W/V) sodium azide. This antibody is prepared by Saturated Ammonium Sulfate (SAS) precipitation followed by dialysis against PBS.

Storage:

Maintain refrigerated at 2-8°C for up to 6 months. For long term storage store at -20°C in small aliquots to prevent freeze-thaw cycles.

Precautions:

TGIF1 Antibody (Center L223) is for research use only and not for use in diagnostic or therapeutic procedures.
