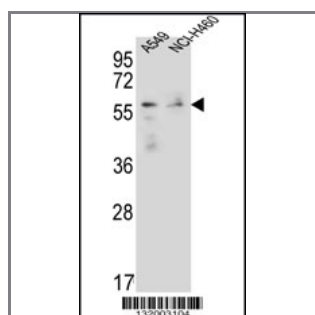


FOXN1 Antibody (Center)

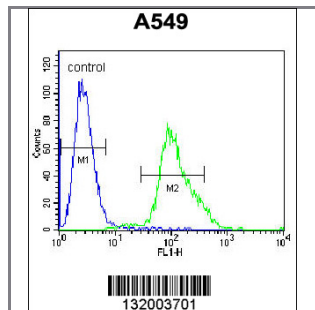
Peptide Affinity Purified Rabbit Polyclonal Antibody (Pab)

Catalog #	Applications:	Reactivity:	Accessions:
AP12053c	WB, FC, E	H	NP_003584.2 , O15353
Concentration:	Size:	Isotype:	Clone Name:
0.25 mg/ml	0.1 mg	Rabbit Ig	RB32003

Application Data: Calculated MW: 68925 Da



FOXN1 Antibody (Center) (Cat. #AP12053c) western blot analysis in A549,NCI-H460 cell line lysates (35ug/lane).This demonstrates the FOXN1 antibody detected the FOXN1 protein (arrow).



FOXN1 Antibody (Center) (Cat. #AP12053c) flow cytometric analysis of A549 cells (right histogram) compared to a negative control cell (left histogram).FITC-conjugated goat-anti-rabbit secondary antibodies were used for the analysis.

Gene ID:	Gene Symbol:
8456	FOXN1

Other Names:

FOXN1,Forkhead box protein N1,RONU; WHN

Target/Specificity:

This FOXN1 antibody is generated from rabbits immunized with a KLH conjugated synthetic peptide between 357-386 amino acids from the Central region of human FOXN1.

Application Notes:

The suggested dilution is:
ELISA 1:1,000

Western blotting 1:100~500

Flow cytometric 1:10~50

Format:

Purified polyclonal antibody supplied in PBS with 0.09% (W/V) sodium azide. This antibody is purified through a protein A column, followed by peptide affinity purification.

Storage:

Maintain refrigerated at 2-8°C for up to 6 months. For long term storage store at -20°C in small aliquots to prevent freeze-thaw cycles.

Precautions:

FOXN1 Antibody (Center) is for research use only and not for use in diagnostic or therapeutic procedures.
