

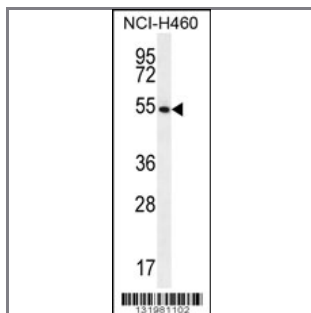
GSR Antibody (C-term)

Peptide Affinity Purified Rabbit Polyclonal Antibody (Pab)

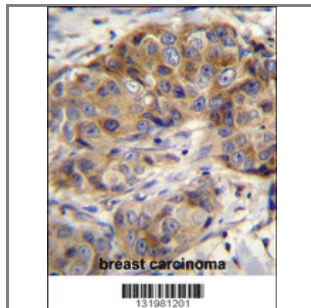
Catalog #	Applications:	Reactivity:	Accessions:
AP12046b	WB, IF, IHC, E	H	NP_000628.2 , P00390
Concentration:	Size:	Isotype:	Clone Name:
0.25 mg/ml	0.1 mg	Rabbit Ig	RB31981

Application Data:

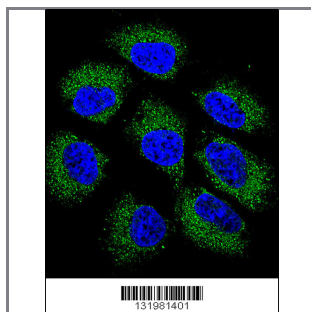
Calculated MW: 56257 Da



GSR Antibody (C-term) (Cat. #AP12046b) western blot analysis in NCI-H460 cell line lysates (35ug/lane). This demonstrates the GSR antibody detected the GSR protein (arrow).



GSR Antibody (C-term) (Cat. #AP12046b) immunohistochemistry analysis in formalin fixed and paraffin embedded human breast carcinoma followed by peroxidase conjugation of the secondary antibody and DAB staining. This data demonstrates the use of GSR Antibody (C-term) for immunohistochemistry. Clinical relevance has not been evaluated.



Confocal immunofluorescent analysis of GSR Antibody (C-term) (Cat#AP12046b) with NCI-H460 cell followed by Alexa Fluor 488-conjugated goat anti-rabbit IgG (green). DAPI was used to stain the cell nuclear (blue).

Gene ID:	Gene Symbol:
2936	GSR

Other Names:

GSR, Glutathione reductase, mitochondrial, GLUR; GRD1

Target/Specificity:

This GSR antibody is generated from rabbits immunized with a KLH conjugated synthetic peptide between 387-416 amino acids from the C-terminal region of human GSR.

Application Notes:

The suggested dilution is:

ELISA 1:1,000

Western blotting 1:100~500

Immunohistochemistry 1:10~50

Immunofluorescence 1:10~50

Format:

Purified polyclonal antibody supplied in PBS with 0.09% (W/V) sodium azide. This antibody is purified through a protein A column, followed by peptide affinity purification.

Storage:

Maintain refrigerated at 2-8°C for up to 6 months. For long term storage store at -20°C in small aliquots to prevent freeze-thaw cycles.

Precautions:

GSR Antibody (C-term) is for research use only and not for use in diagnostic or therapeutic procedures.
