

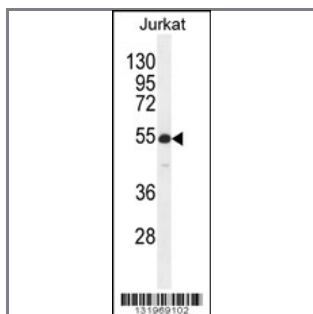
RBPJL Antibody (N-term)

Peptide Affinity Purified Rabbit Polyclonal Antibody (Pab)

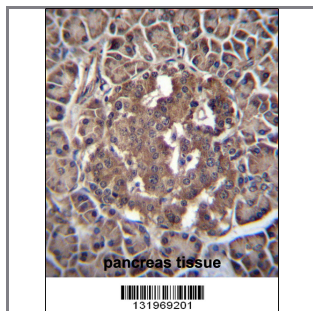
Catalog #	Applications:	Reactivity:	Accessions:
AP12042a	WB, IHC, E	H	Q9UBG7 , NP_055091.2
Concentration:	Size:	Isotype:	Clone Name:
0.25 mg/ml	0.1 mg	Rabbit Ig	RB31969

Application Data:

Calculated MW: 56751 Da



RBPJL Antibody (N-term) (Cat. #AP12042a) western blot analysis in Jurkat cell line lysates (35ug/lane). This demonstrates the RBPJL antibody detected the RBPJL protein (arrow).



RBPJL Antibody (N-term) (Cat. #AP12042a) immunohistochemistry analysis in formalin fixed and paraffin embedded human pancreas tissue followed by peroxidase conjugation of the secondary antibody and DAB staining. This data demonstrates the use of RBPJL Antibody (N-term) for immunohistochemistry. Clinical relevance has not been evaluated.

Gene ID:	Gene Symbol:
11317	RBPJL

Other Names:

RBPJL, Recombining binding protein suppressor of hairless-like protein, RBPL; RBPSUHL

Target/Specificity:

This RBPJL antibody is generated from rabbits immunized with a KLH conjugated synthetic peptide between 15-44 amino acids from the N-terminal region of human RBPJL.

Application Notes:

The suggested dilution is:

ELISA 1:1,000
Western blotting 1:100~500
Immunohistochemistry 1:10~50

Format:

Purified polyclonal antibody supplied in PBS with 0.09% (W/V) sodium azide. This antibody is purified through a protein A column, followed by peptide affinity purification.

Storage:

Maintain refrigerated at 2-8°C for up to 6 months. For long term storage store at -20°C in small aliquots to prevent freeze-thaw cycles.

Precautions:

RBPJL Antibody (N-term) is for research use only and not for use in diagnostic or therapeutic procedures.
