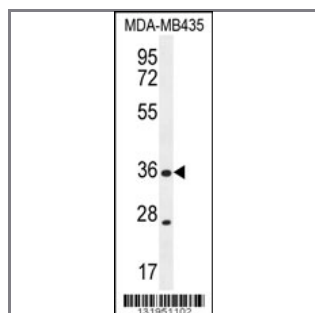


XCR1 Antibody (C-term)

Peptide Affinity Purified Rabbit Polyclonal Antibody (Pab)

Catalog #	Applications:	Reactivity:	Accessions:
AP12041b	WB, E	H	P46094 , NP_005274.1
Concentration:	Size:	Isotype:	Clone Name:
0.25 mg/ml	0.1 mg	Rabbit Ig	RB31951

Application Data: Calculated MW: 38508 Da



XCR1 Antibody (C-term) (Cat. #AP12041b) western blot analysis in MDA-MB435 cell line lysates (35ug/lane). This demonstrates the XCR1 antibody detected the XCR1 protein (arrow).

Gene ID:	Gene Symbol:
2829	XCR1

Other Names:

XCR1, Chemokine XC receptor 1, CCXCR1; GPR5

Target/Specificity:

This XCR1 antibody is generated from rabbits immunized with a KLH conjugated synthetic peptide between 302-333 amino acids from the C-terminal region of human XCR1.

Application Notes:

The suggested dilution is:

ELISA 1:1,000

Western blotting 1:100~500

Format:

Purified polyclonal antibody supplied in PBS with 0.09% (W/V) sodium azide. This antibody is purified through a protein A column, followed by peptide affinity purification.

Storage:

Maintain refrigerated at 2-8°C for up to 6 months. For long term storage store at -20°C in

small aliquots to prevent freeze-thaw cycles.

Precautions:

XCR1 Antibody (C-term) is for research use only and not for use in diagnostic or therapeutic procedures.
