

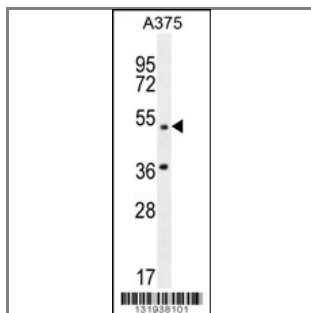
## AP1M1 Antibody (Center)

### Peptide Affinity Purified Rabbit Polyclonal Antibody (Pab)

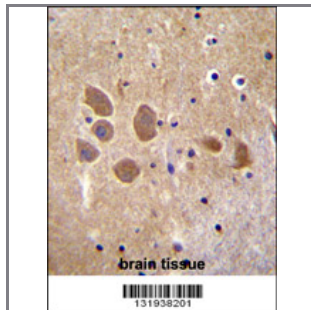
Catalog #	Applications:	Reactivity:	Accessions:
AP12036c	WB, IF, IHC, E	H	<a href="#">Q9BXS5</a> , <a href="#">NP_115882.1</a>
Concentration:	Size:	Isotype:	Clone Name:
0.25 mg/ml	0.1 mg	Rabbit Ig	RB31938

#### Application Data:

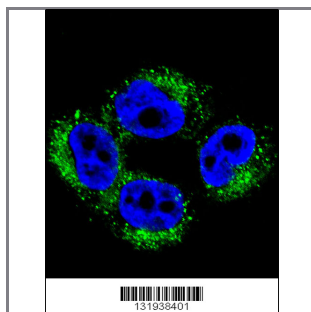
Calculated MW: 48587 Da



AP1M1 Antibody (Center) (Cat. #AP12036c) western blot analysis in A375 cell line lysates (35ug/lane). This demonstrates the AP1M1 antibody detected the AP1M1 protein (arrow).



AP1M1 Antibody (Center) (Cat. #AP12036c) immunohistochemistry analysis in formalin fixed and paraffin embedded human brain tissue followed by peroxidase conjugation of the secondary antibody and DAB staining. This data demonstrates the use of AP1M1 Antibody (Center) for immunohistochemistry. Clinical relevance has not been evaluated.



Confocal immunofluorescent analysis of AP1M1 Antibody (Center) (Cat#AP12036c) with A375 cell followed by Alexa Fluor 488-conjugated goat anti-rabbit IgG (green). DAPI was used to stain the cell nuclear (blue).

Gene ID:	Gene Symbol:
<a href="#">8907</a>	AP1M1

#### Other Names:

AP1M1,AP-1 complex subunit mu-1,CLTNM

---

**Target/Specificity:**

This AP1M1 antibody is generated from rabbits immunized with a KLH conjugated synthetic peptide between 206-235 amino acids from the Central region of human AP1M1.

---

**Application Notes:**

The suggested dilution is:

ELISA 1:1,000

Western blotting 1:100~500

Immunohistochemistry 1:10~50

Immunofluorescence 1:10~50

---

**Format:**

Purified polyclonal antibody supplied in PBS with 0.09% (W/V) sodium azide. This antibody is purified through a protein A column, followed by peptide affinity purification.

---

**Storage:**

Maintain refrigerated at 2-8°C for up to 6 months. For long term storage store at -20°C in small aliquots to prevent freeze-thaw cycles.

---

**Precautions:**

AP1M1 Antibody (Center) is for research use only and not for use in diagnostic or therapeutic procedures.

---