

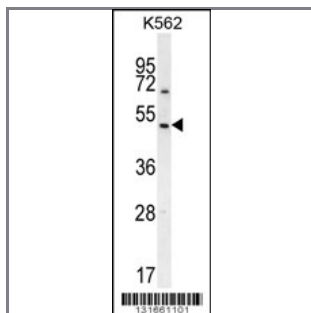
RGS7 Antibody (C-term)

Peptide Affinity Purified Rabbit Polyclonal Antibody (Pab)

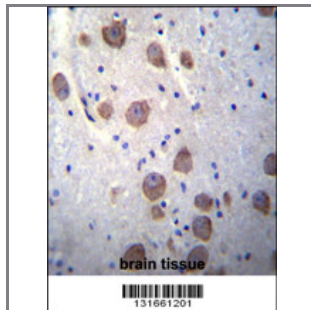
Catalog #	Applications:	Reactivity:	Accessions:
AP12015b	WB, IHC, E	H	P49802 , NP_002915.3
Concentration:	Size:	Isotype:	Clone Name:
0.25 mg/ml	0.1 mg	Rabbit Ig	RB31661

Application Data:

Calculated MW: 57668 Da



RGS7 Antibody (C-term) (Cat. #AP12015b) western blot analysis in K562 cell line lysates (35ug/lane). This demonstrates the RGS7 antibody detected the RGS7 protein (arrow).



RGS7 Antibody (C-term) (Cat. #AP12015b) immunohistochemistry analysis in formalin fixed and paraffin embedded human brain tissue followed by peroxidase conjugation of the secondary antibody and DAB staining. This data demonstrates the use of RGS7 Antibody (C-term) for immunohistochemistry. Clinical relevance has not been evaluated.

Gene ID:	Gene Symbol:
6000	RGS7

Other Names:

RGS7, Regulator of G-protein signaling 7,

Target/Specificity:

This RGS7 antibody is generated from rabbits immunized with a KLH conjugated synthetic peptide between 447-477 amino acids from the C-terminal region of human RGS7.

Application Notes:

The suggested dilution is:
ELISA 1:1,000

Western blotting 1:100~500
Immunohistochemistry 1:10~50

Format:

Purified polyclonal antibody supplied in PBS with 0.09% (W/V) sodium azide. This antibody is purified through a protein A column, followed by peptide affinity purification.

Storage:

Maintain refrigerated at 2-8°C for up to 6 months. For long term storage store at -20°C in small aliquots to prevent freeze-thaw cycles.

Precautions:

RGS7 Antibody (C-term) is for research use only and not for use in diagnostic or therapeutic procedures.
