

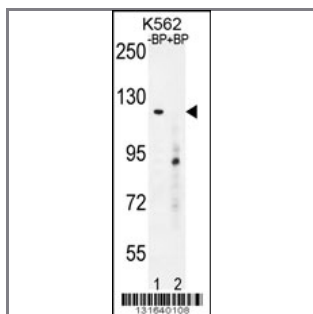
DEPD5 Antibody (C-term)

Peptide Affinity Purified Rabbit Polyclonal Antibody (Pab)

Catalog #	Applications:	Reactivity:	Accessions:
AP12010b	WB, E	H	O75140 , NP_001007189.1
Concentration:	Size:	Isotype:	Clone Name:
0.25 mg/ml	0.1 mg	Rabbit Ig	RB31640

Application Data:

Calculated MW: 177910 Da



Western blot analysis of DEPDC5 Antibody (C-term) Pab (Cat. #AP12010b) pre-incubated without (lane 1) and with (lane 2) blocking peptide in K562 cell line lysate. DEPDC5 Antibody (C-term) (arrow) was detected using the purified Pab (1:60/250 dilution).

Gene ID:	Gene Symbol:
9681	DEPDC5

Other Names:

DEPDC5, DEP domain-containing protein 5, KIAA0645

Target/Specificity:

This DEPDC5 antibody is generated from rabbits immunized with a KLH conjugated synthetic peptide between 1411-1440 amino acids from the C-terminal region of human DEPDC5.

Application Notes:

The suggested dilution is:

ELISA 1:1,000

Western blotting 1:100~500

Format:

Purified polyclonal antibody supplied in PBS with 0.09% (W/V) sodium azide. This antibody is purified through a protein A column, followed by peptide affinity purification.

Storage:

Maintain refrigerated at 2-8°C for up to 6 months. For long term storage store at -20°C in small aliquots to prevent freeze-thaw cycles.

Precautions:

DEPD5 Antibody (C-term) is for research use only and not for use in diagnostic or therapeutic procedures.
