

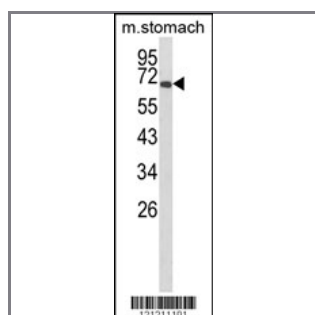
GLIS1 Antibody (N-term)

Peptide Affinity Purified Rabbit Polyclonal Antibody (Pab)

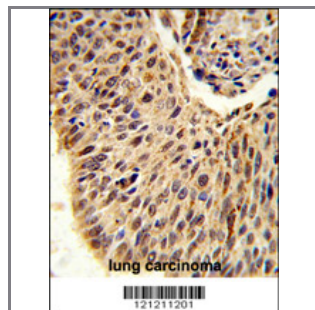
Catalog #	Applications:	Reactivity:	Accessions:
AP8878a	WB, IHC, E	H, M	Q8NBF1

Concentration:	Size:	Isotype:	Clone Name:
0.25 mg/ml	0.1 mg	Rabbit Ig	RB21211

Application Data: Calculated MW: 65976 Da



Western blot analysis of GLIS1 Antibody (N-term) (Cat. #AP8878a) in mouse stomach tissue lysates (35ug/lane). GLIS1 (arrow) was detected using the purified Pab.



Formalin-fixed and paraffin-embedded human lung carcinoma reacted with GLIS1 Antibody (N-term), which was peroxidase-conjugated to the secondary antibody, followed by DAB staining. This data demonstrates the use of this antibody for immunohistochemistry; clinical relevance has not been evaluated.

Gene ID:	Gene Symbol:
148979	GLIS1

Other Names:

GLI-similar 1; Zinc finger protein GLIS1; GLIS1

Target/Specificity:

This GLIS1 antibody is generated from rabbits immunized with a KLH conjugated synthetic peptide between 140~169 amino acids from the N-terminal region of human GLIS1.

Application Notes:

The suggested dilution is:
 ELISA 1:1,000

Western blotting 1:100~500
Immunohistochemistry 1:50~100

Format:

Purified polyclonal antibody supplied in PBS with 0.09% (W/V) sodium azide. This antibody is purified through a protein A column, followed by peptide affinity purification.

Storage:

Maintain refrigerated at 2-8°C for up to 6 months. For long term storage store at -20°C in small aliquots to prevent freeze-thaw cycles.

Precautions:

GLIS1 Antibody (N-term) is for research use only and not for use in diagnostic or therapeutic procedures.
