

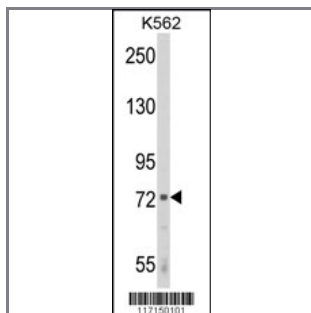
ALOX12 Antibody (C-term)

Purified Rabbit Polyclonal Antibody (Pab)

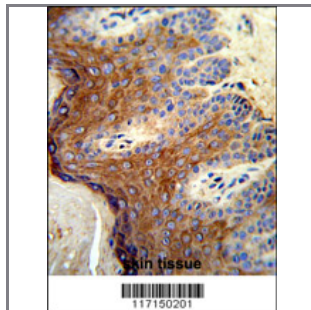
Catalog #	Applications:	Reactivity:	Accessions:
AP8877b	WB, IF, IHC, FC, E	H	P18054

Concentration:	Size:	Isotype:	Clone Name:
0.25 mg/ml	0.1 mg	Rabbit Ig	RB17150

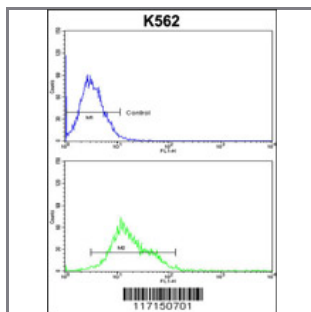
Application Data: Calculated MW: 75694 Da



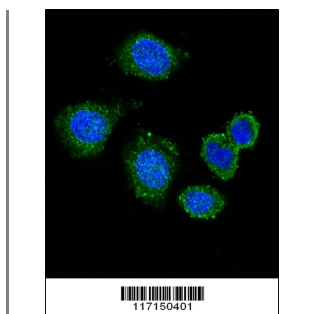
Western blot analysis of ALOX12 Antibody (C-term) (Cat. #AP8877b) in K562 cell line lysates (35ug/lane). ALOX12 (arrow) was detected using the purified Pab.



Formalin-fixed and paraffin-embedded human skin tissue reacted with ALOX12 Antibody (C-term), which was peroxidase-conjugated to the secondary antibody, followed by DAB staining. This data demonstrates the use of this antibody for immunohistochemistry; clinical relevance has not been evaluated.



ALOX12 Antibody (C-term) (Cat. #AP8877b) flow cytometric analysis of k562 cells (bottom histogram) compared to a negative control cell (top histogram). FITC-conjugated goat-anti-rabbit secondary antibodies were used for the analysis.



Confocal immunofluorescent analysis of ALOX12 Antibody (C-term) (Cat. #AP8877b) with 293 cell followed by Alexa Fluor® 488-conjugated goat anti-rabbit IgG (green). DAPI was used to stain the cell nuclear (blue).

Gene ID:

239

Gene Symbol:

ALOX12

Other Names:

Platelet-type lipoxygenase 12; Arachidonate 12-lipoxygenase, 12S-type, 12S-lipoxygenase; 12S-LOX; ALOX12, LOG12

Target/Specificity:

This ALOX12 antibody is generated from rabbits immunized with a KLH conjugated synthetic peptide between 627~656 amino acids from the C-terminal region of human ALOX12 .

Application Notes:

The suggested dilution is:

ELISA 1:1,000

Western blotting 1:50~100

Immunohistochemistry 1:50~100

Flow cytometric 1:10~50

Immunofluorescence 1:10~50

Format:

Purified polyclonal antibody supplied in PBS with 0.09% (W/V) sodium azide. This antibody is prepared by Saturated Ammonium Sulfate (SAS) precipitation followed by dialysis against PBS.

Storage:

Maintain refrigerated at 2-8°C for up to 6 months. For long term storage store at -20°C in small aliquots to prevent freeze-thaw cycles.

Precautions:

ALOX12 Antibody (C-term) is for research use only and not for use in diagnostic or therapeutic procedures.
