

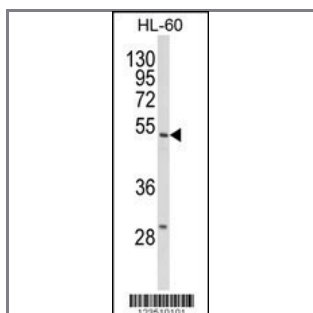
SELENBP1 Antibody (C-term)

Peptide Affinity Purified Rabbit Polyclonal Antibody (Pab)

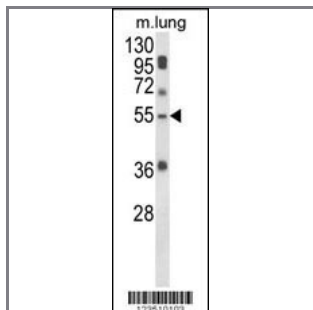
Catalog #	Applications:	Reactivity:	Accessions:
AP8869b	WB, FC, E	H	NP_003935 , Q13228
Concentration:	Size:	Isotype:	Clone Name:
0.25 mg/ml	0.1 mg	Rabbit Ig	RB23510

Application Data:

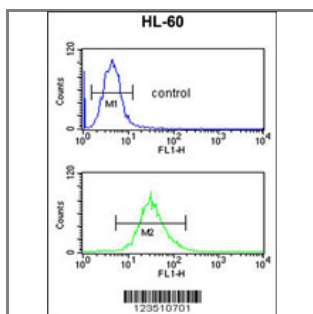
Calculated MW: 52391 Da



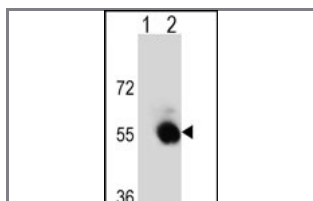
Western blot analysis of SELENBP1 Antibody (C-term) (Cat. #AP8869b) in HL-60 cell line lysates (35ug/lane). SELENBP1 (arrow) was detected using the purified Pab.



Western blot analysis of SELENBP1 Antibody (C-term) (Cat. #AP8869b) in mouse lung tissue lysates (35ug/lane). SELENBP1 (arrow) was detected using the purified Pab.



SELENBP1 Antibody (C-term) (Cat. #AP8869b) flow cytometric analysis of HL-60 cells (bottom histogram) compared to a negative control cell (top histogram). FITC-conjugated goat-anti-rabbit secondary antibodies were used for the analysis.



Western blot analysis of SELENBP1 (arrow) using rabbit polyclonal SELENBP1 Antibody (C-term) (Cat. #AP8869b). 293 cell lysates (2 ug/lane) either nontransfected (Lane 1) or transiently transfected (Lane 2) with the



SELENBP1 gene.

Gene ID:

8991

Gene Symbol:

SELENBP1

Other Names:

56 kDa selenium-binding protein, SBP56, SP56, Selenium-binding protein 1, SELENBP1, SBP

Target/Specificity:

This SELENBP1 antibody is generated from rabbits immunized with a KLH conjugated synthetic peptide between 323~353 amino acids from the C-terminal region of human SELENBP1.

Application Notes:

The suggested dilution is:

ELISA 1:1,000

Western blotting 1:100-500

Flow cytometry 1:10~50

Format:

Purified polyclonal antibody supplied in PBS with 0.09% (W/V) sodium azide. This antibody is purified through a protein A column, followed by peptide affinity purification.

Storage:

Maintain refrigerated at 2-8°C for up to 6 months. For long term storage store at -20°C in small aliquots to prevent freeze-thaw cycles.

Precautions:

SELENBP1 Antibody (C-term) is for research use only and not for use in diagnostic or therapeutic procedures.
