

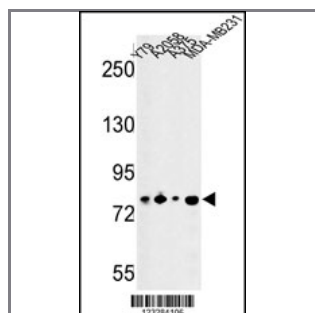
CSRP2BP Antibody (Center)

Peptide Affinity Purified Rabbit Polyclonal Antibody (Pab)

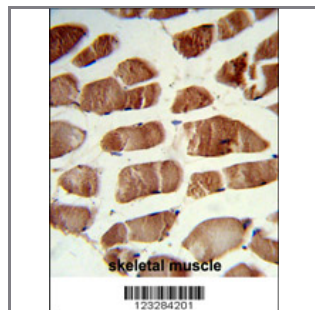
Catalog #	Applications:	Reactivity:	Accessions:
AP8865c	WB, IHC, E	H, M	Q9H8E8
Concentration:	Size:	Isotype:	Clone Name:
0.25 mg/ml	0.1 mg	Rabbit Ig	RB23284

Application Data:

Calculated MW: 74282 Da Isoform 2 Da



Western blot analysis of CSRP2BP Antibody (Center) (Cat. #AP8865c) in Y79, A2058, A375, MDA-MB231 cell line lysates (35ug/lane). CSRP2BP (arrow) was detected using the purified Pab.



Formalin-fixed and paraffin-embedded human skeletal muscle reacted with CSRP2BP Antibody (Center), which was peroxidase-conjugated to the secondary antibody, followed by DAB staining. This data demonstrates the use of this antibody for immunohistochemistry; clinical relevance has not been evaluated.

Gene ID:	Gene Symbol:
57325	CSRP2BP

Other Names:

ADA2A-containing complex subunit 2, ATAC2; CRP2-binding partner, CRP2BP; Cysteine-rich protein 2-binding protein, CSRP2-binding protein; CSRP2BP

Target/Specificity:

This CSRP2BP antibody is generated from rabbits immunized with a KLH conjugated synthetic peptide between 253~283 amino acids from the Center region of human CSRP2BP.

Application Notes:

The suggested dilution is:

ELISA 1:1,000
Western blotting 1:100~500
Immunohistochemistry 1:50~100

Format:

Purified polyclonal antibody supplied in PBS with 0.09% (W/V) sodium azide. This antibody is purified through a protein A column, followed by peptide affinity purification.

Storage:

Maintain refrigerated at 2-8°C for up to 6 months. For long term storage store at -20°C in small aliquots to prevent freeze-thaw cycles.

Precautions:

CSRP2BP Antibody (Center) is for research use only and not for use in diagnostic or therapeutic procedures.
