

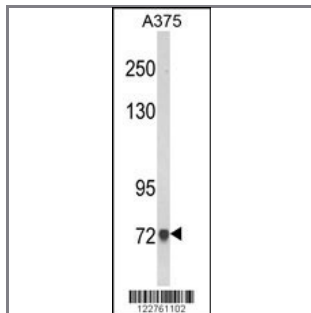
AMOTL2 Antibody (Center)

Peptide Affinity Purified Rabbit Polyclonal Antibody (Pab)

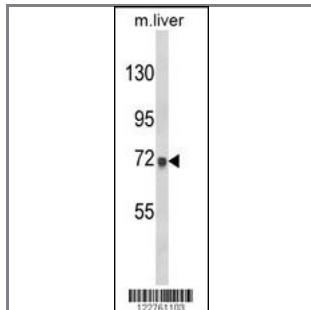
Catalog #	Applications:	Reactivity:	Accessions:
AP8860c	WB, E	H, M	Q9Y2J4
Concentration:	Size:	Isotype:	Clone Name:
0.25 mg/ml	0.1 mg	Rabbit Ig	RB22761

Application Data:

Calculated MW: 85750 Da



Western blot analysis of AMOTL2 Antibody (Center) (Cat. #AP8860c) in A375 cell line lysates (35ug/lane). AMOTL2 (arrow) was detected using the purified Pab.



Western blot analysis of AMOTL2 Antibody (Center) (Cat. #AP8860c) in mouse liver tissue lysates (35ug/lane). AMOTL2 (arrow) was detected using the purified Pab.

Gene ID:	Gene Symbol:
51421	AMOTL2

Other Names:

Leman coiled-coil protein, LCCP; Angiomotin-like protein 2; AMOTL2, KIAA0989

Target/Specificity:

This AMOTL2 antibody is generated from rabbits immunized with a KLH conjugated synthetic peptide between 132~161 amino acids from the Center region of human AMOTL2.

Application Notes:

The suggested dilution is:
ELISA 1:1,000

Western blotting 1:100~500

Format:

Purified polyclonal antibody supplied in PBS with 0.09% (W/V) sodium azide. This antibody is purified through a protein A column, followed by peptide affinity purification.

Storage:

Maintain refrigerated at 2-8°C for up to 6 months. For long term storage store at -20°C in small aliquots to prevent freeze-thaw cycles.

Precautions:

AMOTL2 Antibody (Center) is for research use only and not for use in diagnostic or therapeutic procedures.
