

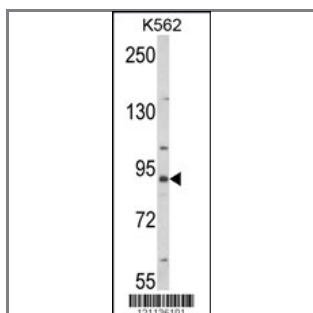
MFN2 Antibody (Center)

Peptide Affinity Purified Rabbit Polyclonal Antibody (Pab)

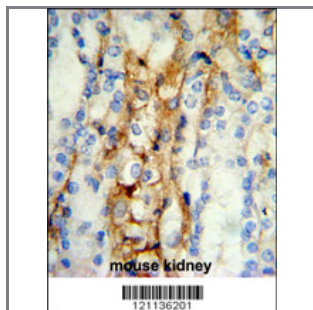
Catalog #	Applications:	Reactivity:	Accessions:
AP8840c	WB, IHC, FC, E	H	O95140
Concentration:	Size:	Isotype:	Clone Name:
0.25 mg/ml	0.1 mg	Rabbit Ig	RB21136

Application Data:

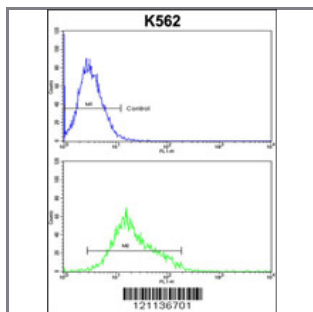
Calculated MW: 86402 Da



Western blot analysis of MFN2 Antibody (Center) (Cat. #AP8840c) in K562 cell line lysates (35ug/lane). MFN2 (arrow) was detected using the purified Pab.



Formalin-fixed and paraffin-embedded mouse kidney reacted with MFN2 Antibody (Center), which was peroxidase-conjugated to the secondary antibody, followed by DAB staining. This data demonstrates the use of this antibody for immunohistochemistry; clinical relevance has not been evaluated.



MFN2 Antibody (Center)(Cat. #AP8840c) flow cytometric analysis of k562 cells (bottom histogram) compared to a negative control cell (top histogram).FITC-conjugated goat-anti-rabbit secondary antibodies were used for the analysis.

Gene ID:	Gene Symbol:
9927	MFN2

Other Names:

Transmembrane GTPase MFN2; Mitofusin-2 ; MFN2, CPRP1, KIAA0214

Target/Specificity:

This MFN2 antibody is generated from rabbits immunized with a KLH conjugated synthetic peptide between 454~484 amino acids from the Center region of human MFN2.

Application Notes:

The suggested dilution is:

ELISA 1:1,000

Western blotting 1:100-500

Immunohistochemistry 1:50~100

Flow cytometric 1:10~50

Format:

Purified polyclonal antibody supplied in PBS with 0.09% (W/V) sodium azide. This antibody is purified through a protein A column, followed by peptide affinity purification.

Storage:

Maintain refrigerated at 2-8°C for up to 6 months. For long term storage store at -20°C in small aliquots to prevent freeze-thaw cycles.

Precautions:

MFN2 Antibody (Center) is for research use only and not for use in diagnostic or therapeutic procedures.
