

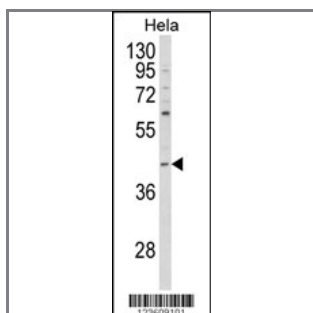
NCK1 Antibody (N-term)

Peptide Affinity Purified Rabbit Polyclonal Antibody (Pab)

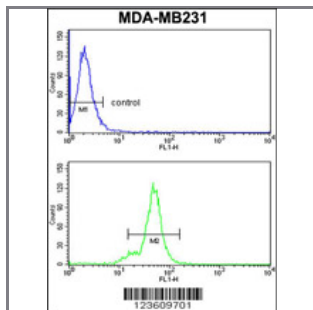
Catalog #	Applications:	Reactivity:	Accessions:
AP8825a	WB, FC, E	H	P16333
Concentration:	Size:	Isotype:	Clone Name:
0.25 mg/ml	0.1 mg	Rabbit Ig	RB23609

Application Data:

Calculated MW: 42864 Da



Western blot analysis of NCK1 Antibody (N-term) (Cat. #AP8825a) in HeLa cell line lysates (35ug/lane). NCK1 (arrow) was detected using the purified Pab.



NCK1 Antibody (N-term) (Cat.#AP8825a) flow cytometry analysis of MDA-MB231 cells (bottom histogram) compared to a negative control cell (top histogram). FITC-conjugated goat-anti-rabbit secondary antibodies were used for the analysis.

Gene ID:	Gene Symbol:
4690	NCK1

Other Names:

SH2/SH3 adaptor protein NCK-alpha; NCK adaptor protein 1, Nck-1; Cytoplasmic protein NCK1; NCK1, NCK

Target/Specificity:

This NCK1 antibody is generated from rabbits immunized with a KLH conjugated synthetic peptide between 9~38 amino acids from the N-terminal region of human NCK1.

Application Notes:

The suggested dilution is:

ELISA 1:1,000
Western blotting 1:100~500
Flow cytometric 1:10~50

Format:

Purified polyclonal antibody supplied in PBS with 0.09% (W/V) sodium azide. This antibody is purified through a protein A column, followed by peptide affinity purification.

Storage:

Maintain refrigerated at 2-8°C for up to 6 months. For long term storage store at -20°C in small aliquots to prevent freeze-thaw cycles.

Precautions:

NCK1 Antibody (N-term) is for research use only and not for use in diagnostic or therapeutic procedures.
