

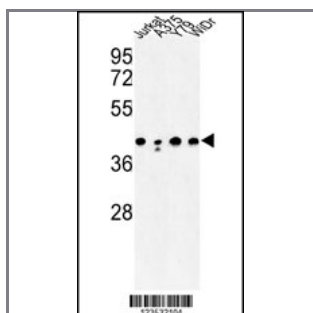
## CANT1 Antibody (N-term)

### Peptide Affinity Purified Rabbit Polyclonal Antibody (Pab)

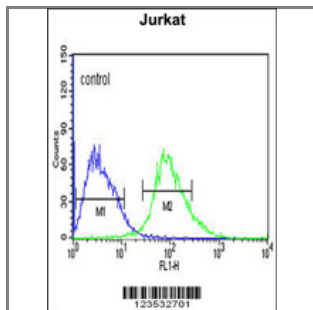
Catalog #	Applications:	Reactivity:	Accessions:
AP8822a	WB, FC, E	H	<a href="#">Q8WVQ1</a>

Concentration:	Size:	Isotype:	Clone Name:
0.25 mg/ml	0.1 mg	Rabbit Ig	RB23532

#### Application Data: Calculated MW: 44840 Da



Western blot analysis of CANT1 Antibody (N-term) (Cat. #AP8822a) in Jurkat, A375, Y79, WiDr cell line lysates (35ug/lane). CANT1 (arrow) was detected using the purified Pab.



CANT1 Antibody (N-term) (Cat. #AP8822a) flow cytometric analysis of Jurkat cells (right histogram) compared to a negative control cell (left histogram). FITC-conjugated goat-anti-rabbit secondary antibodies were used for the analysis.

Gene ID:	Gene Symbol:
<a href="#">124583</a>	CANT1

#### Other Names:

Putative NF-kappa-B-activating protein 107; Putative MAPK-activating protein PM09; Apyrase homolog; Soluble calcium-activated nucleotidase 1, SCAN-1; CANT1, SHAPY

#### Target/Specificity:

This CANT1 antibody is generated from rabbits immunized with a KLH conjugated synthetic peptide between 1~30 amino acids from the N-terminal region of human CANT1.

#### Application Notes:

The suggested dilution is:

ELISA 1:1,000  
Western blotting 1:100~500  
Flow cytometry 1:10~50

---

**Format:**

Purified polyclonal antibody supplied in PBS with 0.09% (W/V) sodium azide. This antibody is purified through a protein A column, followed by peptide affinity purification.

---

**Storage:**

Maintain refrigerated at 2-8°C for up to 6 months. For long term storage store at -20°C in small aliquots to prevent freeze-thaw cycles.

---

**Precautions:**

CANT1 Antibody (N-term) is for research use only and not for use in diagnostic or therapeutic procedures.

---