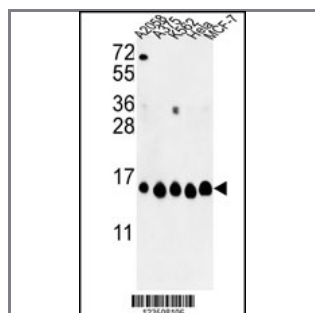


HIST1H2AH Antibody (N-term)

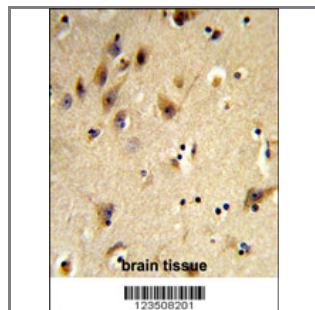
Peptide Affinity Purified Rabbit Polyclonal Antibody (Pab)

Catalog #	Applications:	Reactivity:	Accessions:
AP8820a	WB, FC, IHC, E	H	Q96KK5 , NP_542163
Concentration:	Size:	Isotype:	Clone Name:
0.25 mg/ml	0.1 mg	Rabbit Ig	RB23508

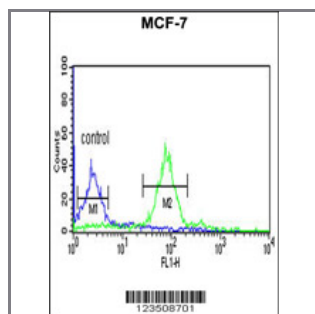
Application Data: Calculated MW: 13906 Da



Western blot analysis of HIST1H2AH Antibody (N-term) (Cat. #AP8820a) in A2058, A375, K562, Hela, MCF-7 cell line lysates (35ug/lane). HIST1H2AH (arrow) was detected using the purified Pab.



Formalin-fixed and paraffin-embedded human brain tissue reacted with HIST1H2AH Antibody (N-term), which was peroxidase-conjugated to the secondary antibody, followed by DAB staining. This data demonstrates the use of this antibody for immunohistochemistry; clinical relevance has not been evaluated.



HIST1H2AH Antibody (N-term) (Cat. #AP8820a) flow cytometric analysis of MCF-7 cells (right histogram) compared to a negative control cell (left histogram). FITC-conjugated goat-anti-rabbit secondary antibodies were used for the analysis.

Gene ID:	Gene Symbol:
85235	HIST1H2AH

Other Names:

Histone H2A/s; Histone H2A type 1-H; HIST1H2AH, HIST1H2AI

Target/Specificity:

This HIST1H2AH antibody is generated from rabbits immunized with a KLH conjugated synthetic peptide between 1~30 amino acids from the N-terminal region of human HIST1H2AH.

Application Notes:

The suggested dilution is:

ELISA 1:1,000

Western blotting 1:100~500

Immunohistochemistry 1:50~100

Flow cytometry 1:10~50

Format:

Purified polyclonal antibody supplied in PBS with 0.09% (W/V) sodium azide. This antibody is purified through a protein A column, followed by peptide affinity purification.

Storage:

Maintain refrigerated at 2-8°C for up to 6 months. For long term storage store at -20°C in small aliquots to prevent freeze-thaw cycles.

Precautions:

HIST1H2AH Antibody (N-term) is for research use only and not for use in diagnostic or therapeutic procedures.
