

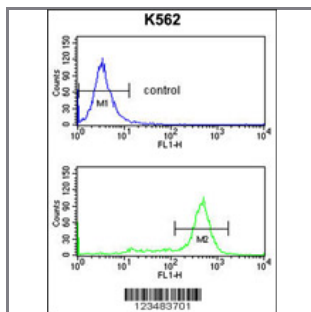
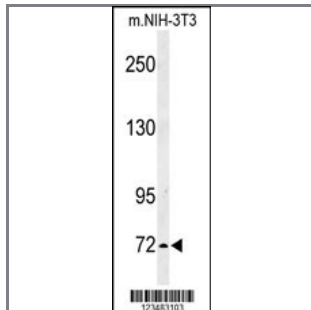
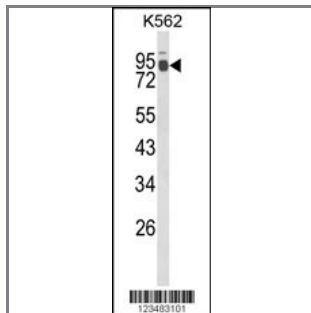
IL1RAPL2 Antibody (Center)

Peptide Affinity Purified Rabbit Polyclonal Antibody (Pab)

Catalog #	Applications:	Reactivity:	Accessions:
AP8817c	WB, FC, E	H, M	Q9NP60

Concentration:	Size:	Isotype:	Clone Name:
0.25 mg/ml	0.1 mg	Rabbit Ig	RB23483

Application Data: Calculated MW: 78670 Da



Gene ID:	Gene Symbol:
26280	IL1RAPL2

Other Names:

Three immunoglobulin domain-containing IL-1 receptor-related 1, TIGIRR-1; Interleukin-1 receptor 9, IL-1R-9; IL-1R9; IL1RAPL-2-related protein; X-linked interleukin-1 receptor accessory protein-like 2, IL-1 receptor accessory protein-like 2; IL-1-RAPL-2; IL-1RAPL-2; IL1RAPL-2; IL1RAPL2, IL1R9

Target/Specificity:

This IL1RAPL2 antibody is generated from rabbits immunized with a KLH conjugated synthetic peptide between 379~409 amino acids from the Center region of human IL1RAPL2.

Application Notes:

The suggested dilution is:

ELISA 1:1,000

Western blotting 1:100~500

Immunohistochemistry 1:50~100

Flow cytometry 1:10~50

Format:

Purified polyclonal antibody supplied in PBS with 0.09% (W/V) sodium azide. This antibody is purified through a protein A column, followed by peptide affinity purification.

Storage:

Maintain refrigerated at 2-8°C for up to 6 months. For long term storage store at -20°C in small aliquots to prevent freeze-thaw cycles.

Precautions:

IL1RAPL2 Antibody (Center) is for research use only and not for use in diagnostic or therapeutic procedures.
