

GLS Antibody (C-term)

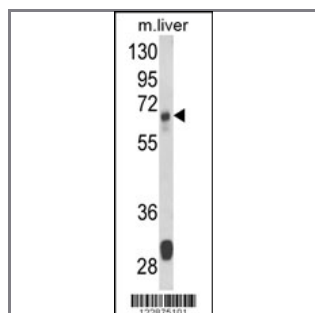
Peptide Affinity Purified Rabbit Polyclonal Antibody (Pab)

Catalog #	Applications:	Reactivity:	Accessions:
AP8809b	WB, IF, FC, IHC, E	H, M	O94925

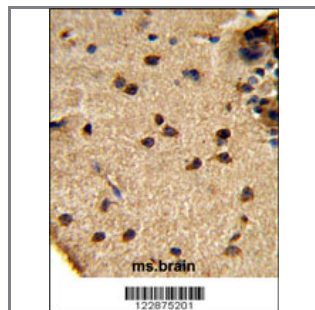
Concentration:	Size:	Isotype:	Clone Name:
0.25 mg/ml	0.1 mg	Rabbit Ig	RB22875

Application Data:

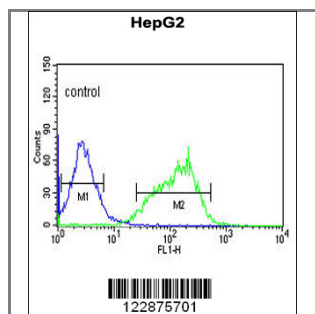
Calculated MW: 65,460 Da Isoform 3 Da



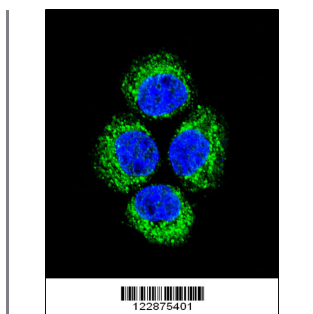
Western blot analysis of GLS Antibody (C-term) (Cat. #AP8809b) in mouse liver tissue lysates (35ug/lane). GLS (arrow) was detected using the purified Pab.



GLS Antibody (C-term) (Cat. #AP8809b) IHC analysis in formalin fixed and paraffin embedded mouse brain tissue followed by peroxidase conjugation of the secondary antibody and DAB staining. This data demonstrates the use of the GLS Antibody (C-term) for immunohistochemistry. Clinical relevance has not been evaluated.



GLS Antibody (C-term) (Cat. #AP8809b) flow cytometric analysis of HepG2 cells (right histogram) compared to a negative control cell (left histogram). FITC-conjugated goat-anti-rabbit secondary antibodies were used for the analysis.



Confocal immunofluorescent analysis of GLS Antibody (C-term) (Cat. #AP8809b) with HeLa cells followed by Alexa Fluor® 489-conjugated goat anti-rabbit IgG (green). DAPI was used to stain the cell nuclei (blue).

Gene ID:

2744

Gene Symbol:

GLS

Other Names:

K-glutaminase; L-glutamine amidohydrolase; Glutaminase kidney isoform, mitochondrial, GLS; GLS, GLS1, KIAA0838

Target/Specificity:

This GLS antibody is generated from rabbits immunized with a KLH conjugated synthetic peptide between 523~553 amino acids from the C-terminal region of human GLS.

Application Notes:

The suggested dilution is:

ELISA 1:1,000

Western blotting 1:100~500

Immunohistochemistry 1:50~100

Flow cytometric 1:10~50

Immunofluorescence 1:10~50

Format:

Purified polyclonal antibody supplied in PBS with 0.09% (W/V) sodium azide. This antibody is purified through a protein A column, followed by peptide affinity purification.

Storage:

Maintain refrigerated at 2-8°C for up to 6 months. For long term storage store at -20°C in small aliquots to prevent freeze-thaw cycles.

Precautions:

GLS Antibody (C-term) is for research use only and not for use in diagnostic or therapeutic procedures.
